



Il catalogo 31 vuol essere la rappresentazione, verso il mercato, di quanto è cresciuta la UFS. Moderni software, personalizzati sulle esigenze dell'azienda, ne coordinano la gestione operativa e finanziaria. La produzione viene assistita dall'ordine alla consegna ottimizzando i flussi e permettendo di creare spazi esecutivi per introdurre nuove tipologie di utensili specifici soddisfacendo, nella fascia più alta, la lavorazione di materiali impegnativi e di ultima generazione. Qualsiasi sia l'esigenza di filettatura si troverà risposta nelle tre linee di prodotto: **LINE**, **PLUS** e **TOP**.

*Our Catalogue 31 is intended to reflect the growth of UFS in the market. New leading-edge software customized to the company's needs helps managing its operational and business development. Production assisted from order to delivery with production flow optimization allowing for space to deal with a range of new types of specific tools meeting the requirements from materials of the latest generation. Whatever the requirements for threading, the answer is in one of our three lines of products: **LINE**, **PLUS** and **TOP**.*

*Le catalogue 31 est une représentation des dernières évolutions des services D'UFS. Des logiciels modernes, adaptés aux besoins de la société, ont été mis en place pour coordonner la gestion opérationnelle et financière. La production est assistée au départ de la commande jusqu'à la livraison en optimisant le flux tout en permettant de créer de l'espace pour introduire de nouveaux types d'outils spéciaux, haut de gamme, pour le traitement des matériaux de dernière génération. Chez UFS nous proposons trois gammes de produits afin de satisfaire toute les exigences du Taroudage: **LINE**, **PLUS** et **TOP**.*



La **UFS Technology** è dotata di apparecchiature di rilevazione sforzi, rilevazione attriti e di registrazione delle prove di filettatura consentendo il continuo monitoraggio del prodotto con una costante ricerca tesa al miglioramento. Su richiesta, è inoltre possibile lo studio ed il testing di nuovi utensili su materiali particolari eventualmente forniti dal cliente. Da qualche mese è operativo un reparto di rivestimento superficiale (TiN / TiCN / TiAlN / TiXC) e un nuovo moderno reparto di tempra sottovuoto.

UFS Technology was set up many years ago to provide continuous product monitoring and research for quality improvement by means of special equipment for friction and stress measurement and threading test recording. Study and testing of new tools on special materials supplied by the customers can also be carried out on request. Since some months it is operating a department of superficial coating (TiN / TiCN / TiAlN / TiXC) and a new modern department of vacuum tempering.

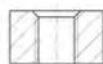
UFS Technology est opérationnel avec un laboratoire équipé de matériel de détection, de friction et d'enregistrement d'efforts. Des essais de filetage permettent la surveillance continue du produit avec une constante recherche précise visant à améliorer le résultat final. Sur demande, nous pouvons étudier et tester de nouveaux outils sur des matériaux spécifiques fournis par le client. Depuis fin 2013, la société UFS a investi dans de nouveaux fours qui permettent d'être autonome et plus précis en ce qui concerne la trempe et les traitements de surface sous vide (TiN / TiCN / TiAlN / TiXC).

TABELLA D'IMPIEGO

APPLICATION TABLE TABLE D'OPÉRATION



Applicazione per foro cieco e passante
Blind and through hole application
Application pour trou borgne et débouchant



Applicazione per foro passante
Through hole application
Application pour trou débouchant



Applicazione per foro cieco
Blind hole application
Application pour trou borgne



- LH Filettatura sinistra
Left hand thread - Filetage à gauche
- Ms58 Applicazione specifica per ottone Ms58
Specific application for brass Ms58 - Spécifique pour laiton Ms58
- AZ Alternatura del filetto
Interrupted threads - Taraud avec filets alternés
- SR Synchro Rigid, maschiatura rigida sincronizzata
Rigid tapping Synchro - Synchro Rigide, taraudage rigide synchronisée
- XL Maschi con gambo lungo
Taps with long shank - Tarauds serie longue
- BT Back Tapered, rastremazione posteriore a botte del filetto
Back tapered thread - Détalonnage arrière
- IT Inox Tapered, rastremazione posteriore orizzontale del filetto
Horizontal back tapered for inox application
INOX Tapered, détalonné conique horizontale pour application inox
- con1:16 Maschi con filettatura conica
Taps with tapered thread - Tarauds à filetage conique
- Al Applicazione specifica per alluminio e leghe d'alluminio
Specific application for aluminium and aluminium alloys
Application spécifique pour l'aluminium et alliages d'aluminium
- Cu Applicazione specifica per rame e leghe rame
Specific application for cooper and cooper alloys - Application spécifique pour le cuivre et ses alliages
- Ti Applicazione specifica per titanio e leghe di titanio
Specific application for titanium and titanium alloys - Application spécifique pour titane et alliages de titane
- Ni Applicazione specifica per nichel e leghe di nichel
Specific application for nickel and nickel alloys - Application spécifique pour le nickel et ses alliages

Indicazione numero di pagina
Page number
Numéro de page

- Utilizzo raccomandato - velocità di taglio m/min
- Recommended Use - cutting speed m/min
- Utilisation Recommandée - vitesse de coupe m/min
- Utilizzo accettabile - velocità di taglio m/min
- Acceptable Use - cutting speed m/min
- Utilisation acceptable - vitesse de coupe m/min

				HB < 120	Rm N/mm ² < 400
1. Acciaio Steel Acier	1.1 Acciaio dolce magnetico	Magnetic soft steel	Acier doux magnétique	< 200	< 700
	1.2 Acciaio da costruzione, cementazione, automatico	Structural, case carburizing and free cutting steel	Acier de construction, trempé et automatique	< 250	< 850
	1.3 Acciaio al carbonio	Plain carbon steel	Acier au carbone	< 250	< 850
	1.4 Acciaio legato - Bonificato, fusioni d'acciaio	Alloyed steel - Tempered steel, steel castings	Acier allié, trempé et revenu, moulages d'acier	< 250	< 850
	1.5 Acciaio legato - Bonificato	Alloyed steel - Tempered steel	Acier allié, trempé et revenu	250+350	850+1200
	1.6 Acciaio legato - Alta resistenza	Alloyed steel - High strength steel	Acier allié, haute résistance	38+45 HRC	1200+1400
	1.7 Acciaio legato - Alta resistenza	Alloyed steel - High strength steel	Acier allié, haute résistance	45+49 HRC	1400+1600
	1.8 Acciaio legato - Temprato	Hardened steel	Acier trempé	49+62 HRC	
	2. Acciaio INOX Stainless Steel Acier inoxydable	2.1 Acciaio inox automatico	Free machining stainless steel	Acier inoxydable, automatique	< 250
2.2 Austenitico		Austenitic	Austénitique	< 250	< 850
2.3 Ferritico, Ferritico + Austenitico, Martensitico		Ferritic, Ferritic + Austenitic, Martensitic	Ferritique, austénitique + ferritiques, martensitiques	< 320	< 1100
2.4 Leghe Cr-Ni resistenti alle alte temperature		Cr-Ni alloys high temperatures resistant	Alliage Cr-Ni résistant à des températures élevées	330+410	1100+1400
3. Ghisa Cast Iron Fonte	3.1 Ghisa grigia lamellare	Lamellar grey cast iron	Fonte grise lamellaire	< 180	< 600
	3.2 Ghisa grigia lamellare	Lamellar grey cast iron	Fonte grise lamellaire	180+300	600+1000
	3.3 Ghisa sferoidale	Nodular cast iron	Fonte ductile	< 300	< 1000
	3.4 Ghisa malleabile	Malleable cast iron	Fonte malleable	< 210	< 700
	3.5 Ghisa vermicolare a grafite compatta	Compacted cast iron with vermicular graphite	Fonte vermiculaire à graphite compacté	200+300	700+1000
4. Alluminio, Magnesio Al, Mg	4.1 Alluminio / Magnesio non legato	Aluminium / Magnesium unalloyed	Aluminium / Magnésium non allié	< 100	< 350
	4.2 Leghe di Al, Si < 0,5% - Truciolo lungo	Al alloys, Si < 0,5% - Long chipping	Alliage Al, Si < 0,5% copeaux longs	< 150	< 500
	4.3 Leghe di Al, Si < 10% - Truciolo medio	Al alloys, Si < 10% - Medium chipping	Alliage Al, Si < 10% copeaux moyen	< 150	< 500
	4.4 Leghe Al, Si > 10% - Truciolo corto	Al alloys, Si > 10% - Short chipping	Alliage Al, Si > 10% copeaux courts	< 180	< 600
	4.5 Leghe standard di magnesio	Magnesium standard alloys	Alliages de magnésium standards		120+300
	4.6 Leghe di magnesio ad alta resistenza	High strength magnesium alloys	Alliages de magnésium de haute résistance	70+120	240+400
5. Rame Cooper Cuivre	5.1 Rame puro, Rame elettrolitico - Truciolo lungo	Cooper unalloyed - Long chipping	Cuivre pur, cuivre électrolytique, copeaux longs	< 100	< 350
	5.2 Leghe di rame, α-ottone - Truciolo lungo	Cooper alloys, soft brass - Long chipping	Alliages de cuivre, α-laiton copeaux longs	< 200	< 700
	5.3 Leghe di rame, β-ottone, Bronzo - Truciolo corto	Cooper alloys, hard brass, bronze - Short chipping	Alliages de cuivre, β-laiton, bronze copeaux courts	< 200	< 700
	5.4 Bronzo ad alta resistenza	High strength bronze	Bronze haute résistance	< 440	< 1500
6. Titanio Titanium Titane	6.1 Titanio non legato	Titanium unalloyed	Titane non allié	< 200	< 700
	6.2 Leghe di titanio	Titanium alloys	Alliages de titane	< 270	< 900
	6.3 Leghe di titanio	Titanium alloys	Alliages de titane	< 410	< 1400
7. Nichel Nickel	7.1 Nichel non legato	Nickel unalloyed	Nickel non allié	< 150	< 500
	7.2 Leghe di Nichel	Nickel alloys	Alliages de nickel	< 270	< 900
	7.3 Leghe di Nichel	Nickel alloys	Alliages de nickel	< 470	< 1600
8. Materie plastiche Synthetic Material Matériaux Plastiques	8.1 Materiali termoplastici - Truciolo extralungo	Thermoplastics - Extra long chipping	Matériaux thermoplastique coupeaux extra-longue		< 80
	8.2 Materiali termoindurenti - Truciolo corto	Thermosetting plastics - Short chipping	Matériaux thermodurcissables coupeaux courts		< 110
	8.3 Materie plastiche con fibre di rinforzo	Reinforced plastic materials	Plastiques avec fibres de renfort	240+440	800+1500
9. Materiali speciali Special materials Matériaux spéciaux	9.1 Materiali metallo - Ceramic (Cermets)	TIC - Hard materials	Matériaux métalliques, céramiques (Cermet)	< 51 HRC	< 1700
	9.2 Leghe a base cobalto	Alloys on cobalt base	Alliages à base de cobalt	< 350	< 1200
	9.3 Leghe di tungsteno	Tungsten alloys	Alliages de tungstène	< 52 HRC	< 1800
10. Grafite / Graphite	10.1 Grafite	Graphite	Graphite		< 100

Descrizione Description - Description	
Tipi di foro Hole Types - Type de trous	
CODICE - CODE - CODE	
Linea - Product line - Ligne	

Elica / NOTE Flute Type / Notes - Hélice / Notes		
M	ISO2/6H	
MJ	ISO1/4H	
	ISO3/6G	
	7G	6H+0,1
MF	ISO2/6H	
MJF	ISO1/4H	
	ISO3/6G	
	7G	6H+0,1
UNC	2B	3BX
UNF	2B	3BX
UNEF	2B	
UNS	2B	
8-12-16 UN	2B	
20-28-32 UN	2B	
G, (Rp)		
NPSM		
NPSF		
Rc		
NPT		
NPTF		
BSW		
PG, Tr, Rd		
EG-M		
Imbocco / Chamfer / Entrée		
Materiale / Steel tap / Matériel		
Rivestimenti / Coating / Revêtements		
Classe appl. / Appl. Class. / Classe d'appol.		
Prof. filett. / Thread depth / Prof. filetage		



CERTIFICATE OF REGISTRATION

This is to certify that:

UFS - UTENSILI FILETTATORI S.R.L.

Via Giotto, 20 | 10080 SPARONE (TO) Italy

is in compliance with the standard

UNI EN ISO 9001:2015

EA Code: 17

concerning the following kinds of products – processes – services:

Design, development, manufacturing and marketing of standard and special threading tools.

Progettazione, sviluppo, fabbricazione e commercializzazione di utensili standard e speciali per filettare.

Certificate No.: **SGQ 1177/B**

Issue Date: **01/06/2018**

Original Certification Date: **20/06/2006**

Current Certification Date: **01/06/2018**

Certificate Expiry Date: **18/06/2021**



ISO 9001
Quality



SGQ 026A SGA 054D SCR 015F

Membro degli Accordi di Mutuo
Riconoscimento EA, IAF e ILAC

Signatory of EA, IAF and ILAC Mutual
Recognition Agreements



Kevin Goodwin
General Manager Technical Services
SAI Global Assurance

Certificato da:
SAI Global Italia, Corso Tazzoli 235/3, 10137 Torino, Italia
Questo certificato è soggetto alle Condizioni Contrattuali per la certificazione SAI Global Italia.
Questo certificato è di proprietà di SAI Global Italia e deve essere restituito su richiesta a SAI Global Italia.
Per verificare la validità del presente certificato, ritorna alla sezione "Autenze Certificate" del sito www.saiglobal.it
Questa valutazione è stata effettuata con la massima diligenza e competenza.
SAI Global si assume la responsabilità solo per comprovata negligenza.
SAI Global Italia fa parte del gruppo SAI Global Pty Ltd, 6/0 George St, Level 37-38, Sydney, NSW, 2000, Australia.



Le caratteristiche tecniche e le informazioni contenute in questo catalogo possono essere soggette a variazioni senza preavviso. I dati contenuti sono da considerarsi salvo errori o/è omissioni. La UFS in qualsiasi momento può a suo giudizio o senza preavviso apportare modifiche agli utensili inseriti a catalogo. La riproduzione dei dati e delle immagini contenute nel catalogo sono vietati salvo autorizzazione scritta da parte della UFS Srl.

The technical features and information in this catalogue are subject to change without notice. The information in the catalogue is to be considered accurate except for possible errors and/or omissions. UFS Srl reserves the right to make changes to the tools shown in this catalogue at any time and without notice. Reproduction of the information and pictures in this catalogue is not allowed without written authorisation from UFS Srl.

Les caractéristiques techniques et les informations contenues dans ce catalogue peuvent changer sans préavis. Les données sont sous réserve d'erreurs ou d'omissions. Le UFS peuvent à tout moment à sa discrétion et sans préavis modifier les outils inclus dans le catalogue. La reproduction de données et les images contenues dans le catalogue sont interdites, sauf autorisation écrite préalable de UFS Srl.



Attenzione: i maschi si possono scheggiare durante il loro impiego e si raccomanda l'uso degli occhiali o dello schermo protettivo.

Warning: taps can splinter during use; protective goggles or shield should therefore be used.

Avertissement: les tarauds peuvent se briser dans leur utilisation; il est recommandé l'utilisation de lunettes ou écran de protection.

	L'azienda <i>The Company - La Société</i>	II ÷ III
	Interpretazione del codice <i>Interpretation of the code - Interprétation du code</i>	IV ÷ V
Pagine introduttive <i>Introduction pages</i> <i>Pages d'introduction</i>	Linee di prodotto principali e campi applicativi <i>Main product lines and application fields - Principales gammes de produits et domaines d'application</i>	VI ÷ VII
	Guida alla scelta del maschio <i>Guide to the choice of the tap - Guide de sélection des tarauds</i>	VIII ÷ XXII
	Indice prodotti <i>Product Index - Index des produits</i>	XXIII ÷ XXVIII
Novità	<i>New products - Nouveaux produits</i>	XXIX ÷ XLI
M - MJ	Filettatura metrica ISO passo grosso DIN13 <i>ISO Metric coarse thread DIN 13 - Filetage métrique ISO pas gros DIN13</i>	1 ÷ 79
MF - MJF	Filettatura metrica ISO passo fine DIN 13 <i>ISO metric fine thread DIN13 - Filetage métrique ISO pas fin DIN 13</i>	81 ÷ 148
UNC	Filettatura americana UNC passo grosso ASME B1.1 <i>UNC coarse thread ASME B1.1 - Filetage américain UNC pas gros ASME B1.1</i>	149 ÷ 163
UNF	Filettatura americana UNF passo fine ASME B1.1 <i>UNF fine thread ASME B1.1 - Filetage américain UNF pas fin ASME B1.1</i>	165 ÷ 179
UNEF	Filettatura americana UNEF passo extra fine ASME B1.1 <i>UNEF extra fine thread ASME B1.1 - Filetage américain UNEF pas extra fin ASME B1.1</i>	182 ÷ 184
UNS	Filettatura americana UNS speciale ASME B1.1 <i>UNS special thread ASME B1.1 - Filetage américain UNS spécial ASME B1.1</i>	185
8-12-16 UN	Filettatura americana UN ASME B1.1 <i>UN thread ASME B1.1 - Filetage américain UN ASME B1.1</i>	186
20-28-32 UN	Filettatura americana UN ASME B1.1 <i>UN thread ASME B1.1 - Filetage américain UN ASME B1.1</i>	187
GAS (BSP)	Filettatura GAS cilindrica Whitworth DIN EN ISO 228 <i>Whitworth pipe thread DIN EN ISO 228 - Filetage Gaz cylindrique Whitworth DIN EN ISO 228</i>	190 ÷ 203
Rp (BSPP)	Filettatura interna GAS cilindrica Whitworth ISO 7-1 <i>Cylindrical Whitworth internal pipe thread ISO 7-1 - Filetage Gaz cylindrique interne Whitworth ISO 7-1</i>	204
NPSM (NPSC)	Filettatura gas cilindrica americana sec. ANSI B1.20.1 <i>American Standard straight pipe thread acc. ANSI B1.20.1 - Filetage Gaz cylindrique américain ANSI B 1.20.1</i>	206
NPSF	Filettatura gas cilindrica americana sec. ANSI B1.20.3 <i>American Standard straight pipe thread acc. ANSI B1.20.3 - Filetage Gaz cylindrique américain ANSI B 1.20.3</i>	207
Rc (BSPT)	Filettatura gas conica Whitworth, conicità 1:16, ISO 7-1 <i>Tapered Whitworth pipe thread, taper 1:16, ISO 7-1 - Filetage Gaz conique Whitworth à cône 01:16, ISO 7-1</i>	210 ÷ 211
NPT	Filettatura gas conica americana, conicità 1:16 sec. ANSI/ASME B1.20.1 <i>American tapered pipe thread, taper 1:16 acc. ANSI/ASME B1.20.1</i> <i>Filetage gaz conique américain à cône 01:16 ANSI/ASME B 1.20.1</i>	212 ÷ 213
NPTF	Filettatura gas conica americana, conicità 1:16 sec. ANSI/ASME B1.20.3 <i>American tapered pipe thread, taper 1:16 acc. ANSI/ASME B1.20.3</i> <i>Filetage gaz conique américain à cône 01:16 ANSI/ASME B 1.20.3</i>	214
BSW	Filettatura Whitworth a passo grosso norma BS 84 <i>Whitworth thread standard BS 84 - Filetage Whitworth pas gros BS 84</i>	218 ÷ 221
PG	Filettatura per tubi corazzati DIN 40430 <i>Steel conduit thread DIN 40430 - Filetage pour tube blindés DIN 40430</i>	222
Tr	Filettatura ISO metrica trapezoidale DIN 103 <i>ISO Metric trapezoidal thread DIN 103 - Filetage ISO métrique trapézoïdal DIN 103</i>	223
Rd	Filettatura tonda DIN 405 <i>Round thread DIN 405 - Filetage rond DIN 405</i>	224
ISO529	Maschi corti ISO529 <i>ISO529 Short Taps - Tarauds courts ISO529</i>	226 ÷ 228
EG M	Filettatura ISO metrica DIN 8140-2 per filetti riportati <i>ISO Metric coarse thread DIN 8140-2 for wire thread inserts (STI)</i> <i>Filetage métrique ISO DIN8140-2 pour HELICOIL (Filet-Rapporté)</i>	229 ÷ 232
KOMBI	Maschi a macchina fora e filetta per acciaio e alluminio <i>Kombi Taps for steel and aluminium - Tarauds (Forets- Taraudeurs) pour acier et aluminium</i>	233 ÷ 234
Filiere / Dies	M, MF, UNC, UNF, GAS, Rc, NPT, BSW, PG	235 ÷ 246
Info	Informazioni tecniche (tabelle di filettatura, foratura e rivestimenti superficiali) <i>Technical information (threading's tables, drilling and types of coatings)</i> <i>Informations techniques (tableaux de filetage, perçage et revêtements)</i>	247 ÷ 278



About us



B2B

Con il nuovo servizio ON LINE B2B, accessibile dal nostro sito www.ufs.it, sarete in grado di visionare i prodotti del catalogo 31 con prezzi e disponibilità a magazzino.

Potrete ordinare direttamente ciò che Vi serve e cercare articoli alternativi. L'ordine sarà confermato e, a tal punto, diventerà effettivo.

Chiedeteci la password!

With new B2B online service accessible from our website www.ufs.it you will be able to view the products in the catalog 31 with a precise stock status updated every day. You can order what you need and search for similar items without losing time.

The order will be confirmed and, to this point, will become effective.

Ask us for the password!

Avec le nouveau service B2B en ligne accessible à partir de notre site Web www.ufs.it vous serez en mesure d'afficher les produits du catalogue 31 avec un état précis des stocks mis à jour tous les jours. Vous pouvez commander directement ce que vous avez besoin, chercher des objets similaires sans perdre de temp. L'ordre sera confirmé et, à ce point, entrera en vigueur. Demandez-nous le mot de passe !

Customer Service

0039-0124-818001 (int. 227) - customerservice@ufs.it

Informazioni *Information Informations*

customerservice@ufs.it

Direzione *Management Direction*

Graziano Doglietto

direzione@ufs.it

Stefano Doglietto

produzione@ufs.it

Area commerciale *Sales area Service commercial*

Graziano Doglietto - Direzione commerciale *Sales managment Direction commerciale*

direzione@ufs.it

Gianfranco Viretto - Vendite Italia *Italian sales Ventes Italie*

commerciale@ufs.it

Daniele Chiarella - Vendite Estero *Foreign sales Ventes etranger*

sales@ufs.it

Dario Longoni *Export manager Export manager*

dario@longoniteam.com

Damiano Longoni *Export manager Export manager*

dam@longoniteam.com

Elisabetta Doglietto - Gestione ordini commerciali *Sales order management Gestion commandes clients*

ordini@ufs.it

Rosanna Blessent - Offerte commerciali *Commercial offers Offres commerciales*

offerte@ufs.it

Area tecnica *Technical area Service technique*

Stefano Doglietto - Direzione di produzione *Production management Directeur de production*

produzione@ufs.it

Ivan Cardamone - Assistenza tecnica clienti *Servicing department Assistance technique clients*

tecnico@ufs.it

Roberto Balaso - Ricerca & sviluppo *Research and development Recherche et developpement*

ricerca@ufs.it

Alex Marco - Ufficio tecnico e qualità *Technical and quality department Bureau technique et qualité*

qualita@ufs.it

Area amministrativa *Administration Service administratif*

Fausto Cucciatti - Amministrazione e contabilità clienti *Administration and Customers Accountancy Administration et comptabilité clients*

amministrazione@ufs.it

Rosanna Blessent - Acquisti e contabilità fornitori *Purchasing and Suppliers Accountancy Achats et comptabilité fournisseur*

contabilefornitori@ufs.it

Emilio Dini - Responsabile del personale *Personnel manager Responsable du personnel*

emilio.dini@ufs.it

Alessandro Faletto - Pianificazione *Production planning Planification de la production*

programmazione@ufs.it



METODO DI COSTRUZIONE DEL CODICE UFS

METHOD OF FAST CONSTRUCTION OF THE UFS' CODE

MÉTHODE DE CONSTRUCTION DU CODE DE L'UFS

E	24	M	...	AZ	-	T
Materiale del maschio <i>Tap steel</i> <i>Matière du taraud</i>	Tipo di scanalatura <i>Flute type</i> <i>Type de goujure</i>	Tipo di filettatura del maschio <i>Threading type</i> <i>Type de filetage</i>	Spazio per l'indicazione del diametro <i>Diameter location</i> <i>Espace pour la désignation du diamètre</i>	Particolari tecnici aggiuntivi del maschio <i>Technical added information</i> <i>Détails techniques supplémentaires du taraud</i>	-	Tipo di trattamento o rivestimento superficiale <i>Tap coating or treatment surface</i> <i>Type de traitement ou revêtement</i>

FILETTATURE









THREADS

FILETAGES

SPIEGAZIONE SIMBOLI UFS

UFS' SYMBOLS CHART

EXPLICATION DES SYMBOLES UFS

M - <i>new</i> MJ	LH	Filettatura sinistra <i>Left hand thread</i> <i>Filetage à gauche</i>	
MF - <i>new</i> MJF			
UNC	AZ	Filetti alternati <i>Interrupted threads</i> <i>Filets alternés</i>	
UNF			
UNEF	X	Applicazione per INOX <i>For stainless steel application</i> <i>Application pour acier inoxydable</i>	
UNS			
8-UN	OT	Applicazione specifica per OTTONE <i>Specific application for BRASS</i> <i>Application spécifique pour le laiton</i>	
12-UN			
16-UN	AL	Applicazione specifica per Alluminio <i>Specific application for Aluminium</i> <i>Application spécifique pour l'aluminium</i>	
20-UN			
28-UN	NI	Applicazione specifica per Nichel <i>Specific application for Nickel</i> <i>Application spécifique pour le Nickel</i>	
32-UN			
GAS	FOR	Lubrificazione interna con uscita assiale <i>Through coolant, axial flow</i> <i>Lubrification interne avec sortie axiale</i>	
Rp			
NPSM	FORy	Lubrificazione interna con uscita radiale <i>Through coolant, radial flow</i> <i>Lubrification interne avec sortie radiale</i>	
NPSF			
Rc	SP	Senza punta anteriore <i>Without centre male</i> <i>Sans pointe avant</i>	
NPT			
NPTF		Maschiatura rigida sincronizzata <i>Rigid tapping Synchro</i> <i>Taradage rigide synchronisé</i>	
BSW			
PG		Maschiatura convenzionale <i>Conventional tapping</i> <i>Taradage conventionnel</i>	
Tr			
Rd		Lavorazione con macchine CNC in maschiatura rigida <i>Tapping with CNC machines</i> <i>Taradage avec CNC machines</i>	
EGM			

CLASSI DI MATERIALI PER MASCHI STANDARD

MATERIAL TYPE FOR STANDARD TAPS

CLASSES DE MATÉRIAUX POUR TARAUD STANDARD

Acciai super rapidi High speed steel Acier super rapide			Acciai sinterizzati da polveri Powdered metallurgy high speed steel Acier fritté		Metallo duro Solid carbide Carbure	
HSS	E	V	P	K	XT	HM
	HSSE	HSSV3	HSSP 8%Co	PM3	PM1	MDI/HM
	R < 850 N/mm ²	R < 1000 N/mm ²	R < 1000 N/mm ²	R < 1400 N/mm ² < 45 HRC	R < 1800 N/mm ² < 52 HRC	45÷62 HRC



Gestione acciai con magazzino automatico verticale
Automatic load system for steels'storage
Gestion d'un entrepôt vertical automatique pour l'acier



Gestione prodotti finiti con magazzino automatico verticale
Automatic load system for taps steels'storage
Gestion des produits finis avec entrepôt vertical automatique

TIPI DI SCANALATURA

FLUTE TYPE

TYPES DE GOUJURES

20	Tagli Diritti (DIN 371) Straight flutes Goujures Droites	42	Elica 10° - 15° dx per Ti e Ni (DIN 371) Spiral flutes 15° R for Ti and Ni Hélice 10° - 15° à droite pour Ti et Ni	80	El 40° dx, rastremazione posteriore (DIN371) Spiral flutes 40° R, back tapered tread Hélice 40° à droite, Détalonnage arrière
21	Tagli Diritti (DIN 376) Straight flutes Goujures Droites	43	Elica 10° - 15° dx per Ti e Ni (DIN 376) Spiral flutes 15° R for Ti and Ni Hélice 10° - 15° à droite pour Ti et Ni	81	El 40° dx, rastremazione posteriore (DIN376) Spiral flutes 40° R, back tapered tread Hélice 40° droit, Détalonnage arrière
24	Imbocco Corretto (DIN 371) Spiral pointed Entrée GUN	50	Elica 15° sinistra (DIN 371) Spiral flutes 15° LH Hélice 15° à gauche	82	Elica 45° - 48° dx (DIN 371) Spiral flutes 45° - 48° R Hélice 45° - 48° à droite
25	Imbocco Corretto (DIN 376) Spiral pointed Entrée GUN	51	Elica 15° sinistra (DIN 376) Spiral flutes 15° LH Hélice 15° à gauche	83	Elica 45° - 48° dx (DIN 376) Spiral flutes 45° - 48° R Hélice 45° - 48° à droite
26	Tagli diritti per GHISA (DIN 371) Straight flutes for cast iron Goujures Droites pour FONTE	52	Elica 10° - 15° sin. per Ti e Ni (DIN 371) Spiral flutes 15° LH for Ti and Ni Hélice 10° - 15° à gauche pour Ti et Ni	92	Elica 45° dx (DIN371) Spiral flutes 45° Hélice 45° à droite
27	Tagli diritti per GHISA (DIN 376) Straight flutes for cast iron Goujures Droites pour FONTE	53	Elica 10° - 15° sin. per Ti e Ni (DIN 376) Spiral flutes 15° LH for Ti and Ni Hélice 10° - 15° à gauche pour Ti et Ni	93	Elica 45° dx (DIN376) Spiral flutes 45° Hélice 45° à droite
28	Elica 25° dx (DIN 371) Spiral flutes 25° R Hélice 25° à droite	60	Elica 40° dx (DIN 371) Spiral flutes 40° R Hélice 40° à droite	94	Elica 45° dx (DIN371) Spiral flutes 45° Hélice 45° à droite
29	Elica 25° dx (DIN 376) Spiral flutes 25° R Hélice 25° à droite	61	Elica 40° dx (DIN 376) Spiral flutes 40° R Hélice 40° à droite	95	Elica 45° dx (DIN376) Spiral flutes 45° Hélice 45° à droite
40	Elica 15° dx (DIN 371) Spiral flutes 15° R Hélice 15° à droite	70	Elica 45° dx per Alluminio (DIN 371) Spiral flutes 45° R for Aluminium Hélice 45° à droite pour Al		
41	Elica 15° dx (DIN 376) Spiral flutes 15° R Hélice 15° à droite	71	Elica 45° dx per Alluminio (DIN 376) Spiral flutes 45° R for Aluminium Hélice 45° à droite pour Al		



LINEE PRODOTTI

PRODUCTS LINES

GAMMES DE PRODUITS



Universal



HR



INOX

Stainless steel
Acier inoxydable



Al-Cu-Fe



Ghisa

Cast iron
Fonte



Ti



Ni

SR

Synchro RIGID

MDI-HR

Metallo duro
Solid Carbide
Carbure

X-SERIES

Rullare
Roll form taps
Tarauds à refouler

K-ROLL

Rullare
Roll form taps
Tarauds à refouler



Uso generale $R < 1000 \text{ N/mm}^2$, acciaio HSSP 8%Co
General purpose $R < 1000 \text{ N/mm}^2$, HSSP steel 8%Co
Usage Général $R < 1000 \text{ N/mm}^2$, Acier HSSP 8% Co



Linea standard HSSE, HSS
Standard line HSSE, HSS
Ligne standard HSSE, HSS

CAMPI APPLICATIVI

APPLICATION FIELD

DOMAINES D'APPLICATION

N	USO GENERALE <i>General purpose - Usage Général</i>
N	USO GENERALE $R \leq 1000\text{N/mm}^2$ <i>General purpose $R \leq 1000\text{N/mm}^2$ - Usage Général $R \leq 1000\text{N/mm}^2$</i>
U	APPLICAZIONI UNIVERSALI $R \leq 1200\text{ N/mm}^2$ <i>Universal Applications $R \leq 1200\text{ N/mm}^2$ - Applications universelles $R \leq 1200\text{ N/mm}^2$</i>
HR	ALTA RESISTENZA <i>High Resistance - Haute Résistance</i>

INOX	ACCIAIO INOSSIDABILE <i>Stainless steel - Acier inoxydable</i>
-------------	--

GG	GHISA <i>Cast Iron - Fonte</i>
-----------	--

Al-Cu-Fe	ALLUMINIO, RAME, ACCIAIO $R \leq 700\text{ N/mm}^2$ <i>Aluminium, Cooper, Steel $R \leq 700\text{ N/mm}^2$ - Aluminium, cuivre, acier $R \leq 700\text{ N/mm}^2$</i>
-----------------	---

OT	OTTONE E BRONZO <i>Brass and Bronze - Laiton et Bronze</i>
-----------	--

Ti	TITANIO <i>Titanium - Titane</i>
-----------	--

Ni	NICHEL <i>Nickel - Nickel</i>
-----------	---

SYNCHRO RIGID	MASCHIATURA RIGIDA SINCRONIZZATA <i>Rigid Tapping Synchro - Taraudage rigide synchronisé</i>
----------------------	--

MDI-HR	METALLO DURO INTEGRALE - ALTA RESISTENZA <i>Solid carbide, high resistance - Carbure, haute résistance</i>
---------------	--

K-ROLL	MASCHI A RULLARE <i>Roll form taps - Tarauds à refouler</i>
---------------	---

P - SERIES	MASCHI A RULLARE <i>Roll form taps - Tarauds à refouler</i>
-------------------	---

X - SERIES	MASCHI A RULLARE <i>Roll form taps - Tarauds à refouler</i>
-------------------	---

MDI -SERIES	MASCHI A RULLARE <i>Roll form taps - Tarauds à refouler</i>
--------------------	---

Maschi a mano, serie 3 pezzi Hand taps, 3 pieces set Tarauds à main, série 3 pièces			Maschi a mano, serie 2 pezzi Hand taps, 2 pieces set Tarauds à main, série 2 pièces		Maschi a mano sinistri LH, serie 3 pezzi Hand taps 3 pieces set - Left LH Tarauds à main à gauche, série 3 pièces			M. a mano sinistri, 2 pezzi Hand taps 2 pieces set - Left LH T. à main à gauche, s. 3 pièces		Maschi a mano per INOX Hand taps 3 pieces set - Stainless steel Tarauds à main, Inox			...
01...	02...	03...	01...	03...	01...LH	02...LH	03...LH	01...LH	03...LH	01...X-VS	02...X-VS	03...X-VS	10FC...
LINE	LINE	LINE	LINE	LINE	LINE	LINE	LINE	LINE	LINE	LINE	LINE	LINE	LINE
00...			00...		00...LH			00...LH		00...X-VS			
						LH	LH	LH					
2-3	2-3	2-3			4	4	4			5	5	5	6
			82-84	82-84					85	85			
150	150	150											
			166	166									
			190	190									
218	218	218											
A (5-6)	D (4-5)	C (2-3)	A (5-6)	C (2-3)	A (5-6)	D (4-5)	C (2-3)	A (5-6)	C (2-3)	A (5-6)	D (4-5)	C (2-3)	C (2-3)
HSS	HSS	HSS	HSS	HSS	HSS	HSS	HSS	HSS	HSS	HSS	HSS	HSS	HSSE
Br	Br	Br	Br	Br	Br	Br	Br	Br	Br	VS	VS	VS	Br
N	N	N	N	N	N	N	N	N	N	INOX	INOX	INOX	N
2xD	2xD	2xD	2xD	2xD	2xD	2xD	2xD	2xD	2xD	2xD	2xD	2xD	1,5xD
1.1	■		■		■		■		■	■			■ 10-15
1.2	■		■		■		■		■	■			■ 10-15
1.3	■		■		■		■		■	■			■ 10-12
1.4	■		■		■		■		■	■			○ 8-10
1.5											○		
1.6													
1.7													
1.8													
2.1	■		■		■		■		■	■			■
2.2	○		○		○		○		○	○			■
2.3	○		○		○		○		○	○			■
2.4													
3.1	○		○		○		○		○	○			■
3.2											○		
3.3											○		
3.4	○		○		○		○		○	○			■
3.5													
4.1	■		■		■		■		■	■			■
4.2	■		■		■		■		■	■			■
4.3	■		■		■		■		■	■			■
4.4	○		○		○		○		○	○			■
4.5													
4.6													
5.1	■		■		■		■		■	■			■
5.2	■		■		■		■		■	■			■
5.3	○		○		○		○		○	○			■
5.4													
6.1													
6.2													
6.3													
7.1													
7.2													
7.3													
8.1													
8.2													
8.3													
9.1													
9.2													
9.3													
10.1													

... per dadi ... for nuts ... pour écrous		Scanalature diritte per OTTONE Straight flutes for BRASS Goujures Droites pour LAITON					Scanalature diritte Straight flutes Goujures Droites			Scanalature diritte - sinistri LH Straight flutes - left LH Goujures Droites - à gauche LH			Filetti alternati AZ... Interrupted threads taps... Filets alternés AZ...	
10FP...	12FP...	LANCIA...	LANCIA...NC	E20...OT	E20...OT-CT	E20/E21...	E20/E21...V	E20/E21...T	E20/E21...LH	E20/E21...LH-V	E20/E21...LH-T	E20/E21...AZ	E20/E21...AZ-V	
LINE	LINE	LINE	LINE	LINE	LINE	LINE	LINE	LINE	LINE	LINE	LINE	LINE	LINE	
		Ms58	Ms58						LH	LH	LH	AZ	AZ	
6	6	7	7	7	7	8-9	8-9	8-9	10	10	10	11	11	
						86-92		86-88	93		93			
						151		151						
						167		167						
						182		182						
						185		185						
						186								
						187		187						
						191, (204 Rp)		191, (204 Rp)						
						206		206						
						207		207						
						219		219						
						222 (PG)		222 (PG)						
						230		230						
20xP	6-8xP	C (2-3)	C (2-3)	C (2-3)	C (2-3)	C (2-3)	C (2-3)	C (2-3)	C (2-3)	C (2-3)	C (2-3)	C (2-3)	C (2-3)	
HSSE	HSSE	HSSE	HSSE	HSSE	HSSE	HSSE	HSSE	HSSE	HSSE	HSSE	HSSE	HSSE	HSSE	
Br	Br	Br	CrN	Br	TiCN	Br	V	TiN	Br	V	TiN	Br	V	
N	N	OT	OT	OT	OT	N	N	N	N	N	N	Al-Cu-Fe	Al-Cu-Fe	
1,5xD	3xD	3xD	3xD	3xD	3xD	1,5xD	1,5xD	1,5xD	1,5xD	1,5xD	1,5xD	1,5xD	1,5xD	
1.1	■ 10-15	■ 10-15				○ 10-15	■ 10-15	■ 20-30	○ 10-15	■ 10-15	■ 20-30	■ 10-15	■ 10-15	
1.2	■ 10-15	■ 10-15				■ 10-15	■ 10-15	■ 20-30	■ 10-15	■ 10-15	■ 20-30			
1.3	■ 10-12	■ 10-12				■ 10-12	■ 10-12	■ 20-25	■ 10-12	■ 10-12	■ 20-25			
1.4	○ 8-10	○ 8-10				○ 8-10	○ 8-10	■ 15-20	○ 8-10	○ 8-10	■ 15-20			
1.5														
1.6														
1.7														
1.8														
2.1														
2.2														
2.3														
2.4														
3.1														
3.2														
3.3														
3.4						○ 8-10	○ 8-10	○ 15-20	○ 8-10	○ 8-10	○ 15-20			
3.5														
4.1												○ 10-15	○ 10-15	
4.2						○ 15-20	○ 15-20	○ 25-30	○ 15-20	○ 15-20	○ 25-30	■ 15-20	■ 15-20	
4.3						○ 10-15	○ 10-15	○ 20-25	○ 10-15	○ 10-15	○ 20-25			
4.4														
4.5														
4.6														
5.1														
5.2						○ 10-15	○ 10-15	○ 20-25	○ 10-15	○ 10-15	○ 20-25	○ 8-12	○ 8-12	
5.3		■ 15-20	■ 25-30	■ 15-20	■ 25-30	○ 15-20	○ 15-20	○ 25-30	○ 15-20	○ 15-20	○ 25-30	■ 10-15	■ 10-15	
5.4														
6.1														
6.2														
6.3														
7.1														
7.2														
7.3														
8.1												○ 20-25	○ 20-25	
8.2		○ 8-10	○ 10-15	○ 8-10	○ 10-15	○ 8-10	○ 8-10	○ 10-15	○ 8-10	○ 8-10	○ 10-15			
8.3		○ 3-5	○ 6-10	○ 3-5	○ 6-10									
9.1														
9.2														
9.3														
10.1														

		Scanalature diritte per GHISA - HSSE Straight flutes for CAST IRON - HSSE Goujures Droites pour FONTE - HSSE				Scanalature diritte per GHISA - PM3 Straight flutes for CAST IRON - PM3 Goujures Droites pour FONTE - PM3				Scanalature diritte per GHISA imbocco E-PM3 Straight flutes for CAST IRON - chamfer E Goujures Droites pour FONTE - entrée E			SYNCHRO Synchro Synchro		
		TOP	LINE	LINE	LINE	TOP	TOP	TOP	TOP	TOP	TOP	TOP	TOP	TOP	TOP
		AZ													
		11	12-13	12-13	12-13	14	14	14	14	15	15	15	SR	SR	SR
			94-95	94-95	94-95	96	96	96	96	97	97	97	98	98	98
			152	152		152	152								
			168	168		168	168								
			192	192		192	192								
		C (2-3)	C (2-3)	C (2-3)	C (2-3)	C (2-3)	C (2-3)	C (2-3)	C (2-3)	E (1,5-2)	E (1,5-2)	E (1,5-2)	C (2-3)	C (2-3)	C (2-3)
		HSSE	HSSE	HSSE	HSSE	PM3	PM3	PM3	PM3	PM3	PM3	PM3	PM3	PM3	PM3
		TXC	NQ	TiCN	TiCN	TiAlN	TiAlN	TiAlN	TXS	TiAlN	TiAlN	TiAlN	TXC	TXC	TXC
		Al-Cu-Fe	GG	GG	GG	GG	GG	GG	GG	GG	GG	GG	Synchro R	Synchro R	Synchro R
		1,5xD	3xD	3xD	3,5xD	3xD	3,5xD	3,5xD	3,5xD	3xD	3,5xD	3,5xD	3xD	3,5xD	3,5xD
1.1	■ 20-30														
1.2															
1.3															
1.4															
1.5													○ 10-15	○ 10-15	○ 10-15
1.6													■ 8-10	■ 8-10	■ 8-10
1.7															
1.8															
2.1															
2.2															
2.3															
2.4															
3.1		■ 10-15	■ 20-25	■ 20-25	■ 25-30	■ 25-30	■ 25-30	■ 20-25	■ 20-25	■ 20-25	■ 20-25	■ 25-30	■ 25-30	■ 25-30	■ 25-30
3.2		■ 8-10	■ 15-20	■ 15-20	■ 20-25	■ 20-25	■ 20-25	■ 20-25	■ 20-25	■ 15-20	■ 15-20	■ 15-20	■ 20-25	■ 20-25	■ 20-25
3.3		○ 8-10	○ 15-20	○ 15-20	○ 20-25	○ 20-25	○ 20-25	○ 20-25	○ 20-25	○ 15-20	○ 15-20	○ 15-20	○ 20-25	○ 20-25	○ 20-25
3.4		○ 10-15	○ 20-25	○ 20-25	○ 25-30	○ 25-30	○ 25-30	○ 25-30	○ 25-30	○ 20-25	○ 20-25	○ 20-25	○ 25-30	○ 25-30	○ 25-30
3.5		○ 8-10	○ 15-20	○ 15-20	■ 20-25	■ 20-25	■ 20-25	■ 20-25	■ 20-25	■ 15-20	■ 15-20	■ 15-20	■ 20-25	■ 20-25	■ 20-25
4.1	○ 20-25														
4.2	■ 25-30														
4.3		○ 15-20	○ 30-40	○ 30-40									○ 30-40	○ 30-40	○ 30-40
4.4		■ 10-15	■ 25-30	■ 25-30	○ 25-30	○ 25-30	○ 25-30	○ 25-30	○ 25-30	○ 25-30	○ 25-30	■ 25-30	■ 25-30	■ 25-30	■ 25-30
4.5		■ 10-15	○ 20-30	■ 20-30								■ 30-40	■ 30-40	■ 30-40	■ 30-40
4.6		■ 10-15	○ 20-30	■ 20-30								■ 30-40	■ 30-40	■ 30-40	■ 30-40
5.1	○ 15-20														
5.2	■ 20-25														
5.3		■ 18-20	■ 25-30	■ 25-30	■ 25-30	■ 25-30	■ 25-30	■ 25-30	■ 25-30	■ 25-30	■ 25-30	■ 35-40	■ 35-40	■ 35-40	■ 35-40
5.4					○ 5-8	○ 5-8	○ 5-8	○ 5-8	○ 5-8			○ 8-10	○ 8-10	○ 8-10	○ 8-10
6.1															
6.2															
6.3															
7.1															
7.2															
7.3															
8.1	○ 25-30														
8.2		■ 8-10	■ 10-15	■ 10-15									■ 20-25	■ 20-25	■ 20-25
8.3													■ 10-15	■ 10-15	■ 10-15
9.1															
9.2															
9.3															
10.1		○ 10-15	○ 15-20	○ 15-20	○ 15-20	○ 15-20	○ 15-20	○ 15-20	○ 15-20	○ 15-20	○ 15-20	○ 20-25	○ 20-25	○ 20-25	○ 20-25

Scanalature diritte per alta resistenza - HR Straight flutes for high strength materials - HR Goujures Droites pour haute résistance - HR				Scanalature diritte in metallo duro - MD Straight flutes, hard material - HM Goujures Droites, Carbure			Imbocco coretto per fori passanti Spiral pointed for through holes Entrée GUN pour trous débouchants				Imbocco coretto sinistri LH Spiral pointed - left LH Entrée GUN - gauche LH			
TOP	TOP	TOP	TOP	TOP	TOP	TOP	LINE	LINE	LINE	LINE	LINE	LINE	LINE	
≤45HRC			≤52HRC			≤62HRC					LH	LH	LH	
17	17	17	18	19	19	19	20-21	20-21	20-21	20-21 (TXC)	22	22	22	
							23		23					
							23		23					
							24		24					
99	99	99		99			100-103	100-103	100-103	100-103 (TXC)	104		104	
							105							
							105							
							105							
							153	153	153	153				
							169	169	169	169				
							183		183					
							193	193	193	193				
							220	220	220	220				
							222 (PG)		222 (PG)					
							231		231					
C (2-3)	C (2-3)	C (2-3)	C (2-3)	C (2-3)	C (2-3)	D (4-5)	B (4-5)	B (4-5)	B (4-5)	B (4-5)	B (4-5)	B (4-5)	B (4-5)	
PM3	PM3	PM3	PM1	MDI/HM	MDI/HM	MDI/HM	HSSE	HSSE	HSSE	HSSE	HSSE	HSSE	HSSE	
TXC	TXC	TXC	TiAlN	Br	TiCN	TiCN	Br	V	TiN	TXC/XP	Br	V	TiN	
HR	HR	HR	HR	GG	GG	HR	N	N	N	N	N	N	N	
1,5xD	3,5xD	3,5xD	1,5xD	3,5xD	3,5xD	1,5xD	3xD	3xD	3xD	3xD	3xD	3xD	3xD	
1.1							○ 10-15	■ 10-15	■ 20-30	■ 20-30	○ 10-15	■ 10-15	■ 20-30	
1.2							■ 10-15	■ 10-15	■ 20-30	■ 20-30	■ 10-15	■ 10-15	■ 20-30	
1.3	○ 25-30	○ 25-30					■ 10-12	■ 10-12	■ 20-25	■ 20-25	■ 10-12	■ 10-12	■ 20-25	
1.4	■ 20-25	■ 20-25					○ 8-10	○ 8-10	■ 15-20	■ 15-20	○ 8-10	○ 8-10	■ 15-20	
1.5	○ 5-12	■ 5-12	■ 5-12											
1.6	■ 5-8	■ 5-8	■ 5-8	○ 5-8										
1.7				■ 4-6			○ 4-6							
1.8							■ 1-4							
2.1											○ 10-15			
2.2											○ 8-10			
2.3														
2.4														
3.1	■ 25-30	■ 25-30		■ 30-40	■ 40-60									
3.2	■ 20-25	■ 20-25		■ 25-30	■ 30-40									
3.3	○ 20-25	○ 20-25		○ 25-30	○ 30-40				○ 10-15	○ 10-15			○ 10-15	
3.4	○ 25-30	○ 25-30		○ 30-40	○ 40-60				■ 15-20	■ 15-20			■ 15-20	
3.5	■ 20-25	■ 20-25		■ 25-30	■ 30-40									
4.1							○ 10-15	■ 10-15	○ 20-25		○ 10-15	■ 10-15	○ 20-25	
4.2							■ 15-20	■ 15-20	■ 25-30	■ 25-30	■ 15-20	■ 15-20	■ 25-30	
4.3	○ 30-40	■ 30-40	■ 30-40	○ 40-50	○ 60-70				○ 20-25	○ 20-25			○ 20-25	
4.4	■ 25-30	■ 25-30	■ 25-30	■ 30-40	■ 40-60									
4.5	■ 20-30	■ 20-30	■ 20-30	■ 40-60	■ 60-80									
4.6	■ 20-30	■ 20-30	■ 20-30	■ 40-60	■ 60-80									
5.1							○ 8-12	■ 8-12	○ 15-20		○ 8-12	■ 8-12	○ 15-20	
5.2							○ 10-15	■ 10-15	■ 20-25	■ 20-25	○ 10-15	■ 10-15	■ 20-25	
5.3	■ 25-30	■ 25-30	■ 25-30	○ 40-50	○ 60-70									
5.4	○ 5-8	a 5-8	○ 5-8	■ 5-8	○ 8-10	○ 12-15	■ 5-10							
6.1									○ 5-8				○ 5-8	
6.2														
6.3														
7.1									○ 6-8				○ 6-8	
7.2														
7.3														
8.1														
8.2	■ 10-15	○ 10-15	○ 10-15		○ 20-25	○ 30-35								
8.3	■ 6-10	○ 6-10	○ 6-10		○ 10-15	○ 15-20								
9.1				○ 3-5			■ 5-10							
9.2														
9.3				○ 2-3			■ 4-8							
10.1	○ 15-20	■ 15-20	■ 15-20		■ 20-25	■ 30-35								

Imbocco corretto Synchro <i>Spiral pointed Synchro</i> <i>Entrée GUN Synchro</i>		Imbocco corretto HR <i>Spiral pointed - HR</i> <i>Entrée GUN - HR</i>		Imbocco corretto per INOX <i>Spiral pointed for stainless steel</i> <i>Entrée GUN pour Inox</i>				Elica 15° sinistra, fori passanti <i>Helix 15° left, through holes</i> <i>Hélice 15° à gauche, trous débouchants</i>			Elica 15° sinistra Titanio e Nichel... <i>Helix 15° left for Ti and Ni...</i> <i>Hélice 15° à gauche pour Ti et Ni</i>		
TOP	TOP	TOP	TOP	LINE	TOP	TOP	TOP	LINE	LINE	LINE	TOP	TOP	TOP
SR	SR							L15°	L15°	L15°	Ti	Ti	Ni
30	30	31	31	32	32	32	32	33	33	33	L15° 34	L15° 34 (MJ)	L10° 35
											34 (MJ)	34 (MJ)	35
109	109	110	110	111	111	111	111	112	112	112	113	113	114
											113	113	114
					155						156	156	
					171						172	172	
195	195					196							
B (4-5)	B (4-5)	B (4-5)	B (4-5)	B (4-5)	B (4-5)	B (4-5)	B (4-5)	D (4-5)	D (4-5)	D (4-5)	D (4-5)	D (4-5)	D (4-5)
PM3	PM3	PM3	PM3	HSSE	HSSV3	PM3	PM3	HSSE	HSSE	HSSE	PM3	PM3	PM3
TXC	TXC	TXC	TXC	V	TXC	TXC	TXC	Br	V	XP	V	TiCN	Br
Synchro R	Synchro R	HR	HR	INOX	INOX	INOX	INOX	N	N	N	Ti	Ti	Ni
3xD	3,5xD	3xD	3,5xD	3xD	3xD	3xD	3,5xD	3xD	3xD	3xD	3xD	3xD	3xD
1.1	■ 40-45	■ 40-45						○ 10-15	■ 10-15	■ 20-30			
1.2	■ 40-45	■ 40-45						■ 10-15	■ 10-15	■ 20-30			
1.3	■ 35-40	■ 35-40				■ 20-25	■ 20-25	■ 20-25	■ 10-12	■ 10-12	■ 20-25		
1.4	■ 25-30	■ 25-30				■ 15-20	■ 15-20	■ 15-20	○ 8-10	○ 8-10	■ 15-20		
1.5	■ 10-15	■ 10-15	■ 5-12	■ 5-12		○ 5-12	■ 5-12	■ 5-12					
1.6			■ 5-8	■ 5-8			○ 5-8	○ 5-8				■ 5-8	
1.7													
1.8													
2.1	■ 20-25	■ 20-25		■ 6-8	■ 10-15	■ 10-15	■ 10-15						
2.2	■ 15-20	■ 15-20		■ 5-7	■ 8-10	■ 8-10	■ 8-10						
2.3	■ 10-15	■ 10-15		○ 3-5	■ 6-8	■ 6-8	■ 6-8						
2.4	■ 10-12	■ 10-12			○ 6-8	■ 6-8	■ 6-8					■ 6-8	
3.1													
3.2													
3.3	■ 20-25	■ 20-25	■ 15-20	■ 15-20						○ 10-15		■ 15-20	
3.4	■ 25-30	■ 25-30	■ 20-25	■ 20-25						○ 15-20		■ 20-25	
3.5													
4.1	■ 30-40	■ 30-40											
4.2	■ 45-50	■ 45-50								○ 15-20			
4.3	■ 30-40	■ 30-40								○ 20-25			
4.4			○ 25-30	○ 25-30								○ 25-30	
4.5	■ 30-40	■ 30-40											
4.6	■ 30-40	■ 30-40											
5.1	■ 20-25	■ 20-25											
5.2	■ 25-30	■ 25-30								○ 10-15	○ 20-25		
5.3	■ 35-40	■ 35-40	■ 25-30	■ 25-30								■ 25-30	
5.4												○ 5-8	
6.1	■ 20-30	■ 20-30								○ 5-8	■ 5-10		
6.2	■ 12-15	■ 12-15										■ 4-8	
6.3												■ 2-4	
7.1	■ 20-30	■ 20-30								○ 6-8			
7.2	■ 8-12	■ 8-12										■ 2-4	
7.3													■ 2-3
8.1													
8.2													
8.3													
9.1													
9.2												■ 1-2	
9.3													■ 2-3
10.1													

Elica 15° - HR Helix 15° - HR Hélice 15° - HR		Elica 15° - Titanio Helix 15° - Titanium Hélice 15° - Titane			Elica 10° - Nickel Helix 10° - Nickel Hélice 10° - Nickel			Elica 40° Helix 40° Hélice 40°					
K40/K41...TXC	K40/K41...FOR-TXC	K42/K43...V	K42/K43...CT	K28/K29...AZ-V	K42...NI	K42...NI-CT	K28/K29...V	E60/E61...	E60/E61...V	E60/E61...T	E60/E61...TXC	E60/E61...FOR	E60/E61...FOR-T
TOP	TOP	TOP	TOP	TOP	TOP	TOP	TOP	LINE	LINE	LINE	LINE	LINE	LINE
		Ti	Ti	Ti-AZ	Ni	Ni	Ni						
R15°	R15°	R15°	R15°	R25°	R10°	R10°	R25°	R40°	R40°	R40°	R40°	R40°	R40°
43	43	44	44	44	45	45	45	46-47	46-47	46-47	46-47 (TXC)	48	48
		44 (MJ)			45			50	50	50	50		
								51			51		
		120	120		121	121		122-126	122-126	122-126	122-126(TXC)	127	127
		120			121			129					
								129					
		158	158					159	159	159	159		
		174	174					175	175	175	175		
								184			184		
								198	198	198	198		
								221	221	221	221		
								232			232		
C (2-3)	C (2-3)	C (2-3)	C (2-3)	C (2-3)	C (2-3)	C (2-3)	C (2-3)	C (2-3)	C (2-3)	C (2-3)	C (2-3)	C (2-3)	C (2-3)
PM3	PM3	PM3	PM3	PM3	PM3	PM3	PM3	HSSE	HSSE	HSSE	HSSE	HSSE	HSSE
TXC	TXC	V	TiCN	V	Br	TiCN	V	Br	V	TiN	TXC/XP	Br	TiN
HR	HR	Ti	Ti	Ti	Ni	Ni	Ni	N	N	N	N	N	N
1,5xD	2,5xD	1,5xD	1,5xD	2,5xD	1,5xD	1,5xD	2,5xD	2,5xD	2,5xD	2,5xD	2,5xD	3xD	3xD
1.1								○ 10-15	■ 10-15	■ 20-30	■ 20-30	○ 10-15	■ 20-30
1.2								■ 10-15	■ 10-15	■ 20-30	■ 20-30	■ 10-15	■ 20-30
1.3								■ 10-12	■ 10-12	■ 20-25	■ 20-25	■ 10-12	■ 20-25
1.4								○ 8-10	○ 8-10	■ 15-20	■ 15-20	○ 8-10	■ 15-20
1.5	■ 5-12	■ 5-12											
1.6	■ 5-8	■ 5-8		■ 5-8			■ 5-8						
1.7													
1.8													
2.1													
2.2											○ 10-15		
2.3											○ 8-10		
2.4				■ 6-8									
3.1													
3.2													
3.3	■ 15-20	■ 15-20		■ 15-20						○ 10-15	○ 10-15		○ 10-15
3.4	■ 20-25	■ 20-25		■ 20-25						■ 15-20	■ 15-20		■ 15-20
3.5													
4.1								○ 10-15	■ 10-15	○ 20-25		○ 10-15	○ 20-25
4.2								■ 15-20	■ 15-20	■ 25-30	■ 25-30	■ 15-20	■ 25-30
4.3										○ 20-25	○ 20-25		○ 20-25
4.4	○ 25-30	○ 25-30		○ 25-30									
4.5	■ 20-30	■ 20-30											
4.6	■ 20-30	■ 20-30											
5.1								○ 8-12	■ 8-12	○ 15-20		○ 8-12	○ 15-20
5.2								○ 10-15	■ 10-15	■ 20-25	■ 20-25	○ 10-15	■ 20-25
5.3	■ 25-30	■ 25-30		■ 25-30									
5.4				○ 5-8			■ 5-8						
6.1			■ 5-10		■ 5-10								
6.2				■ 4-8	■ 4-8								
6.3				■ 2-4									
7.1									■ 6-8				
7.2				■ 2-4			■ 2-4	■ 2-4					
7.3						■ 2-3							
8.1													
8.2													
8.3													
9.1													
9.2				■ 1-2			■ 3-5						
9.3						■ 2-3							
10.1													

Elica 40°, acciaio HSSP 8% Co, imbocco E
Helix 40°, HSSP steel 8%Co, chamfer E
Hélice 40°, acier HSSP 8%Co, entrée E

Elica 40°, rastremazione posteriore
Helix 40°, back tapered
Hélice 40°, détalonnage arrière

Elica 45°, HSSE
Helix 45°, HSSE
Hélice 45°, HSSE

Elica 45° Universali...
Helix 45° Universal...
Hélice 45°, Universal...

P60/P61E...	P60/P61E...XP	P60/P61E...FOR	P60/P61E...FOR-XP	E80/E81...	E80/E81...V	E80/E81...T	E80/E81...XP	E82/E83...	E82/E83...V	E82/E83...T	E82/E83...XP	K82/K83...	K82/K83...FOR-XP
PLUS	PLUS	PLUS	PLUS	LINE	LINE	LINE	LINE	LINE	LINE	LINE	LINE	TOP	TOP
R40°	R40°	R40°	R40°	R40°	R40°	R40°	R40°	R45°	R45°	R45°	R45°	R45°	R45°
57	57	57	57	58	58	58	58	59	59	59	59	60	60
				132	132	132	132						
												160	160
												176	176
				186									
												199	199
E (1,5-2)	E (1,5-2)	E (1,5-2)	E (1,5-2)	C (2-3)	C (2-3)	C (2-3)	C (2-3)	C (2-3)	C (2-3)	C (2-3)	C (2-3)	C (2-3)	C (2-3)
HSSP	HSSP	HSSP	HSSP	HSSE	HSSE	HSSE	HSSE	HSSE	HSSE	HSSE	HSSE	PM3	PM3
Br	XP	Br	XP	Br	V	TiN	XP	Br	V	TiN	XP	XP	XP
N	N	N	N	N	N	N	N	N	N	N	N	U	U
2,5xD	2,5xD	3xD	3xD	2,5÷3xD	2,5÷3xD	2,5÷3xD	2,5÷3xD	3xD	3xD	3xD	3xD	3xD	3xD
1.1	○ 10-15	■ 20-30	○ 10-15	■ 20-30	○ 10-15	■ 10-15	■ 20-30	■ 20-30	○ 10-15	■ 10-15	■ 20-30	■ 20-30	■ 20-30
1.2	■ 10-15	■ 20-30	■ 10-15	■ 20-30	■ 10-15	■ 10-15	■ 20-30	■ 20-30	■ 10-15	■ 10-15	■ 20-30	■ 20-30	■ 20-30
1.3	■ 10-12	■ 20-25	■ 10-12	■ 20-25	■ 10-12	■ 10-12	■ 20-25	■ 20-25	■ 10-12	■ 10-12	■ 20-25	■ 20-25	■ 20-25
1.4	■ 8-10	■ 15-20	■ 8-10	■ 15-20	○ 8-10	○ 8-10	■ 15-20	■ 15-20	○ 8-10	○ 8-10	■ 15-20	■ 15-20	■ 15-20
1.5	○ 5-12		○ 5-12									■ 5-12	■ 5-12
1.6													
1.7													
1.8													
2.1		○ 10-15		○ 10-15		○ 6-8		○ 10-15		○ 6-8		○ 10-15	■ 10-15
2.2		○ 8-10		○ 8-10		○ 5-7		○ 8-10		○ 5-7		○ 8-10	■ 8-10
2.3												■ 6-8	■ 6-8
2.4													
3.1													
3.2													
3.3		○ 10-15		○ 10-15								■ 10-15	■ 10-15
3.4		■ 15-20		■ 15-20								■ 15-20	■ 15-20
3.5													
4.1	○ 10-15		○ 10-15										
4.2	■ 15-20	■ 25-30	■ 15-20	■ 25-30									
4.3		○ 20-25		○ 20-25				○ 15-20	○ 15-20	○ 25-30	○ 25-30	○ 25-30	○ 25-30
4.4												○ 20-25	○ 20-25
4.5													
4.6													
5.1	○ 8-12		○ 8-12	○ 8-12	■ 8-12	○ 15-20							
5.2	○ 10-15	■ 20-25	○ 10-15	■ 20-25	○ 10-15	■ 10-15	■ 20-25	■ 20-25	○ 10-15	○ 10-15	○ 20-25	○ 20-25	○ 20-25
5.3													
5.4													
6.1													
6.2													
6.3													
7.1													
7.2													
7.3													
8.1													
8.2													
8.3													
9.1													
9.2													
9.3													
10.1													

...		Elica 40° Synchro Helix 40° Synchro Hélice 40° Synchro			Elica 25° per GHISA Helix 25° for CAST IRON Hélice 25° pour FONTE			Elica 40° HR Helix 40° - HR Hélice 40° - HR			Elica 40° - 48° per INOX Helix 40° - 48° for stainless steel Hélice 40° - 48° pour INOX			Maschi a rullare senza canalini... Roll taps without oil groove... Tarauds à refouler sans rainures	
K82/K83...FOR-XP	S80...TXC	S80...FOR-TXC	K28/K29...	K28/K29...CT	K28/K29...FOR-CT	K80/K81...TXC	K80/K81...FOR-TXC	E80/E81...X-V	V82/V83...TXC	K82/K83...X-TXC	K82/K83...FOR-TXC	P25C...	P25C...V		
TOP	TOP	TOP	TOP	TOP	TOP	TOP	TOP	LINE	TOP	TOP	TOP	LINE	LINE		
BT R45°	SR-BT R40°	SR-BT R40°	BT R25°	BT R25°	BT R25°	BT R40°	BT R40°	SR-IT R48°	SR-IT R48°	SR-IT R48°	SR-IT R48°	P-series	P-series		
60	61	61	62	62	62	63	63	64	64	65	65	68	68		
												69	69		
134	135	135				136	136		137	137	137	138	138		
												139	139		
160									161			162			
176									177			178			
199	200	200							201						
C (2-3) PM3 XP N 3xD	C (2-3) PM3 TXC Synchro R 2,5xD	C (2-3) PM3 TXC Synchro R 2,5xD	C (2-3) PM3 Br GG 2,5xD	C (2-3) PM3 TiCN GG 2,5xD	C (2-3) PM3 TiCN GG 2,5xD	C (2-3) PM3 TXC HR 2,5xD	C (2-3) PM3 TXC HR 3xD	C (2-3) HSSE V INOX 3,5xD	C (2-3) HSSV3 TXC INOX 3,5xD	C (2-3) PM3 TXC INOX 3,5xD	C (2-3) PM3 TXC INOX 3,5xD	C (2-3) HSSP Br N 3xD	C (2-3) HSSP V N 3xD		
1.1 ■ 20-30	■ 40-45	■ 40-45										○ 15-20	■ 15-20		
1.2 ■ 20-30	■ 40-45	■ 40-45										○ 15-20	■ 15-20		
1.3 ■ 20-25	■ 35-40	■ 35-40								■ 20-25	■ 20-25	■ 20-25	○ 15-18		
1.4 ■ 15-20	■ 25-30	■ 25-30	○ 8-10	■ 15-20	■ 15-20	■ 15-20	■ 15-20	■ 15-20	■ 15-20	■ 15-20	■ 15-20	■ 15-20			
1.5 ■ 5-12	■ 10-15	■ 10-15	○ 3-5	■ 5-12	■ 5-12	■ 5-12	■ 5-12		○ 5-12	■ 5-12	■ 5-12				
1.6															
1.7															
1.8															
2.1 ■ 10-15	■ 20-25	■ 20-25						■ 6-8	■ 10-15	■ 10-15	■ 10-15				
2.2 ■ 8-10	■ 15-20	■ 15-20						■ 5-7	■ 8-10	■ 8-10	■ 8-10				
2.3 ■ 6-8	■ 10-15	■ 10-15						○ 3-5	■ 6-8	■ 6-8	■ 6-8				
2.4	■ 10-12	■ 10-12							○ 6-8	■ 6-8	■ 6-8				
3.1															
3.2															
3.3 ■ 10-15	■ 20-25	■ 20-25	○ 8-10	■ 15-20	■ 15-20	■ 15-20	■ 15-20								
3.4 ■ 15-20	■ 25-30	■ 25-30	○ 10-15	■ 20-25	■ 20-25	■ 20-25	■ 20-25								
3.5															
4.1												○ 20-30	■ 20-30		
4.2 ○ 25-30	■ 45-50	■ 45-50										○ 25-35	■ 25-35		
4.3 ○ 20-25	■ 30-40	■ 30-40													
4.4															
4.5															
4.6															
5.1													○ 10-15		
5.2 ○ 20-25	■ 25-30	■ 25-30											○ 10-15		
5.3															
5.4															
6.1															
6.2															
6.3															
7.1															
7.2															
7.3															
8.1															
8.2															
8.3															
9.1															
9.2															
9.3															
10.1															

	Maschi a rullare con canalini <i>Roll taps with oil groove</i> <i>Tarands à refouler avec rainures</i>				Maschi a rullare per fori passanti <i>Roll taps for through holes</i> <i>Tarands à refouler pour trous débouchants</i>				Maschi a rullare sinistri LH <i>Roll taps left - LH</i> <i>Tarands à refouler à gauche - LH</i>				M. rullare senza canalini PM3... <i>Roll taps without oil groove PM3...</i> <i>T. à refouler sans rainures PM3...</i>	
	P2SC...T	P2CC...	P2CC...V	P2CC...T	P2SC...FP	P2SC...FP-T	P2CC...FP	P2CC...FP-T	P2SC...LH	P2SC...LH-T	P2CC...LH	P2CC...LH-T	X2SC...NC	X2SC...TG
	LINE	LINE	LINE	LINE	LINE	LINE	LINE	LINE	LINE	LINE	LINE	LINE	TOP	TOP
	P-series	P-series	P-series	P-series	P-series	P-series	P-series	P-series	LH	LH	LH	LH	Al, Cu, Fe	
	68	70	70	70	72	72	72	72	73	73	73	73	74	74
	69	71	71	71										74 new
	138	140	140	140	142	142	142	142	143	143	143	143		144
	139	141	141	141										144
	162	162		162										
	178	178		178										
		202		202										
	C (2-3)	C (2-3)	C (2-3)	C (2-3)	D (4-5)	D (4-5)	D (4-5)	D (4-5)	C (2-3)	C (2-3)	C (2-3)	C (2-3)	C (2-3)	C (2-3)
	HSSP	HSSP	HSSP	HSSP	HSSP	HSSP	HSSP	HSSP	HSSP	HSSP	HSSP	HSSP	HSSP	PM3
	TiN	Br	V	TiN	Br	TiN	Br	TiN	Br	TiN	Br	TiN	CrN	TiN-G
	N	N	N	N	N	N	N	N	N	N	N	N	N	N
	3xD	3xD	3xD	3xD	3xD	3xD	3xD	3xD	3xD	3xD	3xD	3xD	3xD	3xD
	1.1	■ 20-30	○ 15-20	■ 15-20	■ 20-30	○ 15-20	■ 20-30	○ 15-20	■ 20-30	○ 15-20	■ 20-30	○ 15-20	■ 30-40	■ 30-40
	1.2	■ 20-30	○ 15-20	■ 15-20	■ 20-30	○ 15-20	■ 20-30	○ 15-20	■ 20-30	○ 15-20	■ 20-30	○ 15-20	■ 30-40	■ 30-40
	1.3	■ 20-25	○ 15-18	■ 20-25	■ 20-25	○ 15-18	■ 20-25	○ 15-18	■ 20-25	○ 15-18	■ 20-25	○ 15-18	■ 30-35	■ 30-35
	1.4	○ 15-20		○ 15-20	○ 15-20		○ 15-20		○ 15-20		○ 15-20		■ 25-30	■ 25-30
	1.5												○ 10-15	○ 10-15
	1.6													
	1.7													
	1.8													
	2.1	■ 10-15		■ 10-15	■ 10-15		■ 10-15		■ 10-15		■ 10-15		■ 10-15	■ 10-15
	2.2	■ 10-12		■ 10-12	■ 10-12		■ 10-12		■ 10-12		■ 10-12		■ 10-12	■ 10-12
	2.3	○ 6-10		○ 6-10	○ 6-10		○ 6-10		○ 6-10		○ 6-10		○ 6-10	■ 6-10
	2.4													○ 6-8
	3.1													
	3.2													
	3.3													
	3.4													
	3.5													
	4.1	■ 35-40	○ 20-30	■ 20-30	■ 35-40	○ 20-30	■ 35-40	○ 20-30	■ 35-40	○ 20-30	■ 35-40	○ 20-30	■ 35-40	■ 35-40
	4.2	■ 40-45	○ 25-35	■ 25-35	■ 40-45	○ 25-35	■ 40-45	○ 25-35	■ 40-45	○ 25-35	■ 40-45	○ 25-35	■ 40-45	■ 40-45
	4.3	■ 35-40		■ 35-40	■ 35-40		■ 35-40		■ 35-40		■ 35-40		■ 35-40	■ 35-40
	4.4													
	4.5													
	4.6													
	5.1	○ 15-20		○ 10-15	○ 15-20		○ 15-20		○ 15-20		○ 15-20		○ 15-20	■ 15-20
	5.2	○ 15-20		○ 10-15	○ 15-20		○ 15-20		○ 15-20		○ 15-20		○ 15-20	■ 15-20
	5.3													
	5.4													
	6.1												■ 10-20	
	6.2													
	6.3													
	7.1													■ 15-20
	7.2													○ 5-8
	7.3													
	8.1													
	8.2													
	8.3													
	9.1													
	9.2													
	9.3													
	10.1													

...	Maschi a rullare con canalini - PM3 Roll taps with oil groove - PM3 Tarauds à refouler avec rainures - PM3				Maschi a rullare con canalini e forati Roll taps with oil groove - internal coolant T. à refouler avec rainures - lubrification interne			Maschi a rullare imbocco E Roll taps chamfer E Tarauds à refouler entrée E			Maschi a rullare MDI Roll taps hard material HM Tarauds à refouler Carbure		Maschi conici CORTI Taps tapered shorts Tarauds conique courts	
	X2SC...CT	X2CC...NC	X2CC...TG	X2CC...CT	X2CC...TXC	X2CC...FOR-TG	X2CC...FOR-YTG	X2SCE...TG	X2CCE...TG	X2CCE...FOR-TG	HM2SC...FOR-T	HM2CC...FOR-CT	E21C...	E41C...V
	TOP	TOP	TOP	TOP	TOP	TOP	TOP	TOP	TOP	TOP	TOP	TOP	LINE	LINE
		Al, Cu, Fe												
	X-series	X-series	X-series	X-series	X-series	X-series	X-series	X-series	X-series	X-series	X-series	X-series	con1:16	con1:16
	74	75	75	75	76	76	76	77	77	77	78	78		
			75 new											
			144		145	145	145	146	146	146				
			144											
			202			202								
													210	210
													212	212
													214	214
	C (2-3)	C (2-3)	C (2-3)	C (2-3)	C (2-3)	C (2-3)	C (2-3)	E (1,5-2)	E (1,5-2)	E (1,5-2)	C (2-3)	C (2-3)	C (2-3)	C (2-3)
	PM3	PM3	PM3	PM3	PM3	PM3	PM3	PM3	PM3	PM3	MDI/HM	MDI/HM	HSSE	HSSE
	TiCN	CrN	TiN-G	TiCN	TXC	TiN-G	TiN-G	TiN-G	TiN-G	TiN-G	TiN	TiCN	Br	V
	N	N	N	N	N	N	N	N	N	N	N	N	N	N
	3xD	3xD	3xD	3xD	3xD	3xD	3xD	3xD	3xD	3xD	3xD	3xD	-	-
1.1	■ 30-40	■ 30-40	■ 30-40	■ 30-40	■ 30-40	■ 30-40	■ 30-40	■ 30-40	■ 30-40	■ 30-40	■ 30-50	■ 30-50	○ 3-5	○ 3-5
1.2	■ 30-40	■ 30-40	■ 30-40	■ 30-40	■ 30-40	■ 30-40	■ 30-40	■ 30-40	■ 30-40	■ 30-40	■ 30-50	■ 30-50	■ 3-5	■ 3-5
1.3	■ 30-35	■ 30-35	■ 30-35	■ 30-35	■ 30-35	■ 30-35	■ 30-35	■ 30-35	■ 30-35	■ 30-35	■ 30-45	■ 30-45	■ 5-7	■ 5-7
1.4	■ 25-30	■ 25-30	■ 25-30	■ 25-30	■ 25-30	■ 25-30	■ 25-30	■ 25-30	■ 25-30	■ 25-30	■ 30-40	■ 30-40	○ 4-6	■ 4-6
1.5	○ 10-15	○ 10-15	○ 10-15	○ 10-15	○ 10-15	○ 10-15	○ 10-15	○ 10-15	○ 10-15	○ 10-15	○ 20-30	○ 20-30		
1.6														
1.7														
1.8														
2.1	■ 10-15	■ 10-15	■ 10-15	■ 10-15	■ 10-15	■ 10-15	■ 10-15	■ 10-15	■ 10-15	■ 10-15	■ 20-25	■ 20-25		○ 3-5
2.2	■ 10-12	■ 10-12	■ 10-12	■ 10-12	■ 10-12	■ 10-12	■ 10-12	■ 10-12	■ 10-12	■ 10-12	■ 15-20	■ 15-20		○ 2-4
2.3	■ 6-10	■ 6-10	■ 6-10	■ 6-10	■ 6-10	■ 6-10	■ 6-10	■ 6-10	■ 6-10	■ 6-10	■ 10-15	■ 10-15		■ 2-3
2.4	○ 6-8	○ 6-8	○ 6-8	○ 6-8	○ 6-8	○ 6-8	○ 6-8	○ 6-8	○ 6-8	○ 6-8	○ 10-15	○ 10-15		
3.1														○ 5-7
3.2														○ 3-5
3.3													○ 3-5	■ 3-5
3.4													○ 5-7	■ 5-7
3.5														
4.1	■ 35-40	■ 35-40	■ 35-40	■ 35-40	■ 35-40	■ 35-40	■ 35-40	■ 35-40	■ 35-40	■ 35-40	■ 40-50	■ 40-50		
4.2	■ 40-45	■ 40-45	■ 40-45	■ 40-45	■ 40-45	■ 40-45	■ 40-45	■ 40-45	■ 40-45	■ 40-45	■ 50-60	■ 50-60	○ 10-15	○ 10-15
4.3	■ 35-40	■ 35-40	■ 35-40	■ 35-40	■ 35-40	■ 35-40	■ 35-40	■ 35-40	■ 35-40	■ 35-40	■ 40-50	■ 40-50	○ 10-15	■ 10-15
4.4														○ 6-8
4.5														
4.6														
5.1	○ 15-20	■ 15-20	○ 15-20	○ 15-20	■ 15-20	○ 15-20	○ 15-20	○ 15-20	○ 15-20	○ 15-20	○ 30-40	○ 30-40		
5.2	○ 15-20	■ 15-20	○ 15-20	○ 15-20	■ 15-20	○ 15-20	○ 15-20	○ 15-20	○ 15-20	○ 15-20	○ 30-40	○ 30-40		
5.3													○ 8-12	■ 8-12
5.4														
6.1		■ 10-20												
6.2														
6.3														
7.1	■ 15-20		■ 15-20	■ 15-20		■ 15-20	■ 15-20	■ 15-20	■ 15-20	■ 15-20	■ 30-35	■ 30-35		
7.2	○ 5-8		○ 5-8	○ 5-8		○ 5-8	○ 5-8	○ 5-8	○ 5-8	○ 5-8	○ 10-15	○ 10-15		
7.3														
8.1														
8.2														
8.3														
9.1														
9.2														
9.3														
10.1														

INDICE PRODOTTI

PRODUCTS INDEX

INDEX DES PRODUITS

Filettatura-Thread-Filetage				M				Filettatura-Thread-Filetage				M				Filettatura-Thread-Filetage				M			
CODICE - code	pg. list.	pg. cat.	Typ.	CODICE - code	pg. list.	pg. cat.	Typ.	CODICE - code	pg. list.	pg. cat.	Typ.	CODICE - code	pg. list.	pg. cat.	Typ.	CODICE - code	pg. list.	pg. cat.	Typ.	CODICE - code	pg. list.	pg. cat.	Typ.
00M	1	002-003	Line	E24M...TZ	15	026	Line	E41M...AZ	23	041	Line	E41M...AZ-V	23	041	Line								
00M...LH	2	004	Line	E24M...V	11	020	Line	E41M...FOR	21	038	Line	E41M...FOR-T	21	038	Line								
00M...X-VS	3	005	Line	E25M...X-V	18	032	Line	E41M...NC	24	041	Line	E41M...T	21	037	Line								
01M	1	002-003	Line	E25M...	11	021	Line	E41M...T+0,1	23	040	Line	E41M...T-4H	22	039	Line								
01M...LH	2	004	Line	E25M...+0,1	14	024	Line	E41M...T-6G	22	039	Line	E41M...T-7G	23	040	Line								
01M...X-VS	3	005	Line	E25M...4H	12	023	Line	E41M...TZ	23	041	Line	E41M...V	21	037	Line								
02M	1	002-003	Line	E25M...-6G	13	023	Line	E41M...XP	21	037	Line	E50M...	18	033	Line								
02M...LH	2	004	Line	E25M...-7G	13	024	Line	E50M...V	19	033	Line	E50M...XP	19	033	Line								
02M...X-VS	3	005	Line	E25M...AL-TXC	15	026	Top	E51M...	19	033	Line	E51M...V	19	033	Line								
03M	2	002-003	Line	E25M...AL-VS	14	026	Line	E51M...XP	19	033	Line	E60M...CP-T	27	046	Line								
03M...LH	2	004	Line	E25M...AZ	15	027	Line	E60M...CP-TXC	27	046	Line	E60M...CP-V	27	046	Line								
03M...X-VS	3	005	Line	E25M...AZ-TXC	15	027	Top	E60M...	26	046	Line	E60M...+0,1	30	051	Line								
10FCM...	3	006	Line	E25M...AZ-TZ	15	027	Line	E60M...-4H	29	050	Line	E60M...6G	29	050	Line								
10FPM...	3	006	Line	E25M...LH	12	022	Line	E60M...7G	30	051	Line	E60M...CP	26	046	Line								
12FPM...	3	006	Line	E25M...LH-T	12	022	Line	E60M...CP	26	046	Line	E60M...FOR	28	048	Line								
E20M...	4	008	Line	E25M...LH-V	12	022	Line	E60M...FOR-T	28	048	Line	E60M...FOR-TXC	28	048	Line								
E20M...AZ	6	011	Line	E25M...NC	15	027	Line	E60M...LH	28	049	Line	E60M...LH-V	29	049	Line								
E20M...AZ-TXC	6	011	Top	E25M...T	11	021	Line	E60M...LH-V	29	049	Line	E60M...LH-XP	29	049	Line								
E20M...AZ-V	6	011	Line	E25M...T+0,1	14	024	Line	E60M...LH-XP	29	049	Line	E60M...NC	32	055	Line								
E20M...LH	5	010	Line	E25M...T-4H	13	023	Line	E60M...NC	32	055	Line	E60M...T	27	046	Line								
E20M...LH-T	6	010	Line	E25M...T-6G	13	023	Line	E60M...T	27	046	Line	E60M...TXC	27	046	Line								
E20M...LH-V	6	010	Line	E25M...T-7G	13	024	Line	E60M...V	27	046	Line	E60M...XP+0,1	30	051	Line								
E20M...-OT	4	007	Line	E25M...TXC	12	021	Line	E60M...XP-4H	29	050	Line	E60M...XP-6G	30	050	Line								
E20M...-OT-CT	4	007	Line	E25M...TZ	15	026	Line	E60M...XP-7G	30	051	Line	E61M...+0,1	30	051	Line								
E20M...SP	4	008	Line	E25M...V	11	021	Line	E61M...-4H	29	050	Line	E61M...6G	29	050	Line								
E20M...SP-T	5	008	Line	E26M...FOR-CT	7	012	Line	E61M...6G	29	050	Line	E61M...FOR	28	048	Line								
E20M...SP-V	4	008	Line	E26M...NQ	7	012	Line	E61M...FOR-T	28	048	Line	E61M...FOR-TXC	28	048	Line								
E20M...T	5	008	Line	E26M...SP-NQ	7	012	Line	E61M...LH	28	049	Line	E61M...LH	28	049	Line								
E20M...V	4	008	Line	E27M...FOR-CT	7	013	Line	E61M...LH-V	29	049	Line	E61M...LH-V	29	049	Line								
E21M	5	009	Line	E27M...NQ	7	013	Line	E61M...LH-XP	29	049	Line	E61M...LH-XP	29	049	Line								
E21M...AZ	6	011	Line	E27M...SP-NQ	7	013	Line	E61M...NC	32	055	Line	E61M...XP+0,1	30	051	Line								
E21M...AZ-TXC	6	011	Top	E26M...CT	7	012	Line	E61M...T	27	046	Line	E61M...XP-4H	29	050	Line								
E21M...AZ-V	6	011	Line	E26M...SP-CT	7	012	Line	E61M...TXC	27	046	Line	E61M...XP-6G	30	050	Line								
E21M...LH	5	010	Line	E27M...CT	7	013	Line	E61M...V	27	046	Line	E61M...+0,1	30	051	Line								
E21M...LH-T	6	010	Line	E27M...SP-CT	7	013	Line	E61M...XP+0,1	30	051	Line	E61M...-4H	29	050	Line								
E21M...LH-V	6	010	Line	E40M...	20	036	Line	E61M...XP-6G	30	050	Line	E61M...6G	29	050	Line								
E21M...T	5	009	Line	E40M...+0,1	23	040	Line	E61M...	27	047	Line	E61M...FOR	28	048	Line								
E21M...V	5	009	Line	E40M...-4H	22	039	Line	E61M...-7G	30	051	Line	E61M...FOR-T	28	048	Line								
E24M...X-V	18	032	Line	E40M...-6G	22	039	Line	E61M...NC	32	055	Line	E61M...FOR-TXC	28	048	Line								
E24M...	10	020	Line	E40M...-7G	22	040	Line	E61M...T	28	047	Line	E61M...LH	28	049	Line								
E24M...+0,1	14	024	Line	E40M...AZ	23	041	Line	E61M...TXC	27	046	Line	E61M...LH-V	29	049	Line								
E24M...4H	12	023	Line	E40M...AZ-V	23	041	Line	E61M...V	27	046	Line	E61M...LH-XP	29	049	Line								
E24M...-6G	13	023	Line	E40M...FOR	21	038	Line	E61M...XP+0,1	30	051	Line	E61M...XP+0,1	30	051	Line								
E24M...-7G	13	024	Line	E40M...FOR-T	21	038	Line	E61M...XP-4H	29	050	Line	E61M...XP-6G	30	050	Line								
E24M...AL	14	026	Line	E40M...NC	24	041	Line	E61M...XP-6G	30	050	Line	E61M...	27	047	Line								
E24M...AL-TXC	15	026	Top	E40M...T	20	036	Line	E61M...-7G	30	051	Line	E61M...-7G	30	051	Line								
E24M...AL-VS	14	026	Line	E40M...T+0,1	23	040	Line	E61M...NC	32	055	Line	E61M...NC	32	055	Line								
E24M...AZ	15	027	Line	E40M...T-4H	22	039	Line	E61M...T	28	047	Line	E61M...T	28	047	Line								
E24M...AZ-TXC	15	027	Top	E40M...T-6G	22	039	Line	E61M...TXC	28	047	Line	E61M...TXC	28	047	Line								
E24M...AZ-TZ	15	027	Line	E40M...T-7G	23	040	Line	E61M...V	27	046	Line	E61M...V	27	046	Line								
E24M...LH	12	022	Line	E40M...TZ	23	041	Line																
E24M...LH-T	12	022	Line	E40M...V	20	036	Line																
E24M...LH-V	12	022	Line	E40M...XP	20	036	Line																
E24M...NC	15	027	Line	E41M...	21	037	Line																
E24M...T	11	020	Line	E41M...+0,1	23	040	Line																
E24M...T+0,1	14	024	Line	E41M...-4H	22	039	Line																
E24M...T-4H	13	023	Line	E41M...-6G	22	039	Line																
E24M...T-6G	13	023	Line	E41M...-7G	22	040	Line																
E24M...T-7G	13	024	Line																				
E24M...TXC	11	020	Line																				

INDICE PRODOTTI

PRODUCTS INDEX
INDEX DES PRODUITS

Filettatura-Thread-Filetage				M				Filettatura-Thread-Filetage				M				Filettatura-Thread-Filetage				M			
CODICE - code				pg. list.	pg. cat.	Typ.		CODICE - code				pg. list.	pg. cat.	Typ.		CODICE - code				pg. list.	pg. cat.	Typ.	
E61M...XP-7G				30	051	Line		K26M...FORY-TX				8	014	Top		K83M...X-TXC				37	065	Top	
E70M...				31	054	Line		K26M...SP-TX				8	014	Top		L24M...				14	025	Line	
E70M...TXC				31	054	Top		K26M...TX				8	014	Top		L24M...CT				14	025	Line	
E70M...TZ				31	054	Line		K26M...TXS				8	014	Top		L25M...				14	025	Line	
E70M...VS				31	054	Line		K27EM...FOR-TX				8	015	Top		E25M...AL				14	026	Line	
E71M...				31	054	Line		K27EM...FORY-TX				9	015	Top		L25M...CT				14	025	Line	
E71M...TXC				31	054	Top		K27EM...TX				8	015	Top		L60...CT				31	053	Line	
E71M...TZ				31	054	Line		K27M...FOR-TX				8	014	Top		L60M...				31	053	Line	
E71M...VS				31	054	Line		K27M...FORY-TX				8	014	Top		L61...CT				31	053	Line	
E80M...X-V				37	064	Line		K27M...TXS				8	014	Top		L61M...				31	053	Line	
E80M...				33	058	Line		K27M...TX				8	014	Top		LANCIAM...				4	007	Line	
E80M...T				34	058	Line		K28M...				36	062	Top		LANCIAM...NC				4	007	Line	
E80M...V				33	058	Line		K28M...AZ-V				26	044	Top		P24M...				16	028	Plus	
E80M...XP				34	058	Line		K28M...CT				36	062	Top		P24M...CT				16	028	Plus	
E81M...X-V				37	064	Line		K28M...FOR-CT				36	062	Top		P24M...T				16	028	Plus	
E81M...				33	058	Line		K28M...V				26	045	Top		P24M...V				16	028	Plus	
E81M...T				34	058	Line		K29M...				36	062	Top		P25M...				16	028	Plus	
E81M...V				33	058	Line		K29M...AZ-V				26	044	Top		P25M...CT				16	028	Plus	
E81M...XP				34	058	Line		K29M...CT				36	062	Top		P25M...T				16	028	Plus	
E82M...				34	059	Line		K29M...FOR-CT				36	062	Top		P25M...V				16	028	Plus	
E82M...T				34	059	Line		K29M...V				26	045	Top		P2CCM...				38	070	Line	
E82M...V				34	059	Line		K40M...FOR-TXC				25	043	Top		P2CCM...FP				40	072	Line	
E82M...XP				34	059	Line		K40M...TXC				25	043	Top		P2CCM...FP-T				40	072	Line	
E83M...				34	059	Line		K41M...FOR-TXC				25	043	Top		P2CCM...LH				40	073	Line	
E83M...T				34	059	Line		K41M...TXC				25	043	Top		P2CCM...LH-T				40	073	Line	
E83M...V				34	059	Line		K42M...CT				25	044	Top		P2CCM...SP				38	070	Line	
E83M...XP				34	059	Line		K42M...NI				26	045	Top		P2CCM...SP-T				39	070	Line	
HM20M...FOR				10	019	Top		K42M...NI-4HX				26	045	Top		P2CCM...SP-V				39	070	Line	
HM20M...FOR-CT				10	019	Top		K42M...NI-CT				26	045	Top		P2CCM...T				39	070	Line	
HM21M...FOR				10	019	Top		K42M...V				25	044	Top		P2CCM...V				39	070	Line	
HM21M...FOR-CT				10	019	Top		K42MJ...V				25	044	Top		P2SCM...				37	068	Line	
HM2CCM...FORY-CT				42	078	Top		K43M...CT				25	044	Top		P2SCM...FP				39	072	Line	
HM2SCM...FOR-T				42	078	Top		K43M...V				25	044	Top		P2SCM...FP-T				40	072	Line	
HM-XT20M...CT				10	019	Top		K43MJ...V				25	044	Top		P2SCM...LH				40	073	Line	
K20M...TXC				9	017	Top		K52M...CT				19	034	Top		P2SCM...LH-T				40	073	Line	
K21M...TXC				9	017	Top		K52M...NI				20	035	Top		P2SCM...SP				37	068	Line	
K22M...FOR-TXC				9	017	Top		K52M...NI-4HX				20	035	Top		P2SCM...SP-T				38	068	Line	
K22M...FORY-TXC				9	017	Top		K52M...NI-CT				20	035	Top		P2SCM...SP-V				38	068	Line	
K23M...FOR-TXC				9	017	Top		K52M...V				19	034	Top		P2SCM...T				38	068	Line	
K23M...FORY-TXC				9	017	Top		K52MJ...V				19	034	Top		P2SCM...V				38	068	Line	
K24M...FORY-TXC				18	031	Top		K52MJ...CT				19	034	Top		P3CCM...				39	071	Line	
K24M...XFORY-TXC				18	032	Top		K53M...CT				19	034	Top		P3CCM...SP				39	071	Line	
K24M...X-TXC				18	032	Top		K53M...V				19	034	Top		P3CCM...SP-T				39	071	Line	
K24M...FORY-XP				17	029	Top		K53MJ...V				19	034	Top		P3CCM...SP-V				39	071	Line	
K24M...TXC				17	031	Top		K53MJ...CT				19	034	Top		P3CCM...T				39	071	Line	
K24M...XP				17	029	Top		K80M...FOR-TXC				36	063	Top		P3CCM...V				39	071	Line	
K25M...FORY-TXC				18	031	Top		K80M...TXC				36	063	Top		P3SCM...				38	069	Line	
K25M...XFORY-TXC				18	032	Top		K81M...FOR-TXC				36	063	Top		P3SCM...SP				38	069	Line	
K25M...X-TXC				18	032	Top		K81M...TXC				36	063	Top		P3SCM...SP-T				38	069	Line	
K25M...FORY-XP				17	029	Top		K82M...FOR-XP				35	060	Top		P3SCM...SP-V				38	069	Line	
K25M...TXC				17	031	Top		K82M...FORY-XP				35	060	Top		P3SCM...T				38	069	Line	
K25M...XP				17	029	Top		K82M...XFORY-TXC				37	065	Top		P3SCM...V				38	069	Line	
K26EM...FOR-TX				8	015	Top		K82M...XP				35	060	Top		P40M...				24	042	Plus	
K26EM...FORY-TX				9	015	Top		K82M...X-TXC				37	065	Top		P40M...CT				24	042	Plus	
K26EM...TX				8	015	Top		K83M...FOR-XP				35	060	Top		P40M...T				24	042	Plus	
K26M...FOR-TX				8	014	Top		K83M...FORY-XP				35	060	Top		P40M...V				24	042	Plus	
								K83M...XFORY-TXC				37	065	Top		P41M...				24	042	Plus	
								K83M...XP				35	060	Top		P41M...CT				24	042	Plus	
															P41M...T				24	042	Plus		
															P41M...V				24	042	Plus		

INDICE PRODOTTI

PRODUCTS INDEX

INDEX DES PRODUITS

Filettatura-Thread-Filetage				M				Filettatura-Thread-Filetage				MF				Filettatura-Thread-Filetage				MF			
CODICE - code	pg. list.	pg. cat.	Typ.	CODICE - code	pg. list.	pg. cat.	Typ.	CODICE - code	pg. list.	pg. cat.	Typ.	CODICE - code	pg. list.	pg. cat.	Typ.	CODICE - code	pg. list.	pg. cat.	Typ.				
P60EM...	33	057	Plus	00MF...	43-44	082-084	Line	E60MF...V	59	122	Line	E61MF...	60-61	123-126	Line								
P60EM...FOR	33	057	Plus	00MF...LH	44	085	Line	E61MF...+0,1	63	129	Line	E61MF...-4H	63	129	Line								
P60EM...FOR-XP	33	057	Plus	01MF...	43-44	082-084	Line	E61MF...-6G	63	129	Line	E61MF...-7G	63	129	Line								
P60EM...XP	33	057	Plus	01MF...LH	44	085	Line	E61MF...FOR	62	127	Line	E61MF...FOR-T	62	127	Line								
P60M...	32	056	Plus	03MF...	43-44	082-084	Line	E61MF...FOR-TXC	62	127	Line	E61MF...LH	63	128	Line								
P60M...T	32	056	Plus	03MF...LH	44	085	Line	E61MF...LH-V	63	128	Line	E61MF...LH-XP	63	128	Line								
P60M...V	32	056	Plus	E20MF...	45	086	Line	E61MF...NC	64	130	Line	E61MF...T	60-61	123-126	Line								
P60M...XP	32	056	Plus	E20MF...T	45	086	Line	E61MF...TXC	62	123-126	Line	E61MF...V	60-61	123-126	Line								
P61EM...	33	057	Plus	E21MF...	45-46	087-092	Line	E71MF...	63	130	Line	E71MF...VS	63	130	Line								
P61EM...FOR	33	057	Plus	E21MF...LH	46	093	Line	E81MF...	64	132	Line	E81MF...	64	132	Line								
P61EM...FOR-XP	33	057	Plus	E21MF...LH-T	46	093	Line	E81MF...T	64	132	Line	E81MF...V	64	132	Line								
P61EM...XP	33	057	Plus	E21MF...T	46	087-088	Line	E81MF...XP	64	132	Line	E83MF...	65	133	Line								
P61M...	32	056	Plus	E24MF...	49	100	Line	E83MF...T	65	133	Line	E83MF...V	65	133	Line								
P61M...T	32	056	Plus	E24MF...T	49	100	Line	E83MF...XP	65	133	Line	HM20MF...FOR	49	099	Top								
P61M...V	32	056	Plus	E24MF...TXC	49	100	Line	HM21MF...FOR	49	099	Top	K21MF...TXC	48	099	Top								
P61M...XP	32	056	Plus	E24MF...V	49	100	Line	K23MF...FOR-TXC	49	099	Top	K23MF...FOR-TXC	49	099	Top								
S20M...FOR-TXC	9	016	Top	E24MF...LH	52	104	Line	K23MF...FOR-TXC	49	099	Top	K23MF...FOR-TXC	49	099	Top								
S20M...FORY-TXC	9	016	Top	E24MF...LH-T	52	104	Line	K25MF...FOR-TXC	54	110	Top	K25MF...FOR-TXC	54	110	Top								
S20M...TXC	9	016	Top	E25MF...AL	52	106	Line	K25MF...FOR-XP	54	108	Top	K25MF...TXC	54	110	Top								
S24M...FORY-TXC	17	030	Top	E25MF...AL-VS	52	106	Line	K25MF...TXC	54	110	Top	K25MF...XFORY-TXC	55	111	Top								
S24M...TXC	17	030	Top	E25MF...	50	101-103	Line	K25MF...XP	53	108	Top	K25MF...X-TXC	55	111	Top								
S80M...FOR-TXC	35	061	Top	E25MF...+0,1	52	105	Line	K27EMF...TX	48	097	Top	K27EMF...TX	48	097	Top								
S80M...TXC	35	061	Top	E25MF...-4H	52	105	Line	K27EMF...FOR-TX	48	097	Top	K27EMF...FOR-TX	48	097	Top								
V24M...TXC	18	032	Top	E25MF...-6G	52	105	Line	K27MF...TX	47	096	Top	K27MF...TX	47	096	Top								
V25M...TXC	18	032	Top	E25MF...-7G	52	105	Line	K27MF...TXS	47	096	Top	K27MF...FOR-TX	48	096	Top								
V82M...TXC	37	064	Top	E25MF...LH	52	104	Line	K27MF...FOR-TX	48	096	Top	K27MF...FOR-TX	48	096	Top								
V83M...TXC	37	064	Top	E25MF...LH-T	52	104	Line	K42MF...CT	59	120	Top	K42MF...CT	59	120	Top								
X2CCEM...FOR-TG	42	077	Top	E25MF...NC	52	106	Plus	K42MF...NI	59	121	Top	K42MF...NI	59	121	Top								
X2CCEM...TG	42	077	Top	E25MF...T	51	101-103	Line	K42MF...NI-4HX	59	121	Top	K42MF...NI-CT	59	121	Top								
X2CCM...CT	41	075	Top	E25MF...V	50	101-103	Line	K42MF...V	59	120	Top	K42MF...V	59	120	Top								
X2CCM...FOR-TG	42	076	Top	E25MF...TXC	51	101-103	Line	K42MJF...V	59	120	Top	K43MF...CT	59	120	Top								
X2CCM...FORY-TG	42	076	Top	E25MF...X-V	54	111	Top	K43MF...V	59	120	Top	K43MF...V	59	120	Top								
X2CCM...NC	41	075	Top	E26MF...FOR-CT	46	094	Line	K52MF...CT	56	113	Top	K52MF...CT	56	113	Top								
X2CCM...SP-CT	41	075	Top	E26MF...NQ	46	094	Line	K52MF...NI	56	114	Top	K52MF...NI	56	114	Top								
X2CCM...SP-NC	41	075	Top	E26MF...SP-NQ	46	094	Line	K52MF...NI-4HX	56	114	Top	K52MF...NI-CT	56	114	Top								
X2CCM...SP-TG	41	075	Top	E27MF...FOR-CT	47	095	Line	K52MF...V	55	113	Top	K52MF...V	55	113	Top								
X2CCM...TG	41	075	Top	E27MF...NQ	47	095	Line	K52MJF...V	56	113	Top	K52MJF...V	56	113	Top								
X2CCM...TXC	42	076	Top	E26MF...CT	46	094	Line	E40MF...	56	115	Line	E40MF...	56	115	Line								
X2SCEM...TG	42	077	Top	E26MF...SP-CT	46	094	Line	E40MF...FOR	58	118	Line	E40MF...FOR	58	118	Line								
X2SCM...CT	41	074	Top	E27MF...CT	46	095	Line	E40MF...FOR-T	58	118	Line	E40MF...FOR-T	58	118	Line								
X2SCM...NC	40	074	Top	E27MF...SP-CT	46	095	Line	E40MF...T	56	115	Line	E40MF...T	56	115	Line								
X2SCM...SP-CT	41	074	Top	E40MF...	56	115	Line	E40MF...V	56	115	Line	E40MF...V	56	115	Line								
X2SCM...SP-NC	40	074	Top	E41MF...	57	116-117	Line	E40MF...XP	56	115	Line	E41MF...	57	116-117	Line								
X2SCM...SP-TG	40	074	Top	E41MF...FOR	58	118	Line	E41MF...FOR	58	118	Line	E41MF...FOR	58	118	Line								
X2SCM...TG	40	074	Top	E41MF...FOR-T	58	118	Line	E41MF...FOR-T	58	118	Line	E41MF...FOR-T	58	118	Line								
X3CCM...SP-TG	41	075	Top	E41MF...T	57	116-117	Line	E41MF...T	57	116-117	Line	E41MF...T	57	116-117	Line								
X3CCM...TG	41	075	Top	E41MF...V	57	116-117	Line	E41MF...V	57	116-117	Line	E41MF...V	57	116-117	Line								
X3SCM...SP-TG	41	074	Top	E41MF...XP	58	116-117	Line	E41MF...XP	58	116-117	Line	E41MF...XP	58	116-117	Line								
X3SCM...TG	41	074	Top	E51MF...	55	112	Line	E51MF...	55	112	Line	E51MF...	55	112	Line								
XT20M...	10	018	Top	E51MF...V	55	112	Line	E51MF...V	55	112	Line	E51MF...V	55	112	Line								
XT20M...TX	10	018	Top	E51MF...XP	55	112	Line	E51MF...XP	55	112	Line	E51MF...XP	55	112	Line								
XT21M...	10	018	Top	E60MF...	59	122	Line	E60MF...	59	122	Line	E60MF...	59	122	Line								
				E60MF...FOR	62	127	Line	E60MF...FOR	62	127	Line	E60MF...FOR	62	127	Line								
				E60MF...FOR-T	62	127	Line	E60MF...FOR-T	62	127	Line	E60MF...FOR-T	62	127	Line								
				E60MF...FOR-TXC	62	127	Line	E60MF...FOR-TXC	62	127	Line	E60MF...FOR-TXC	62	127	Line								
				E60MF...T	59	122	Line	E60MF...T	59	122	Line	E60MF...T	59	122	Line								
				E60MF...TXC	60	122	Line	E60MF...TXC	60	122	Line	E60MF...TXC	60	122	Line								

INDICE PRODOTTI

PRODUCTS INDEX

INDEX DES PRODUITS

Filettatura-Thread-Filetage		MF		
CODICE - code	pg. list.	pg. cat.	Typ.	
K53MF...CT	56	113	Top	
K53MF...V	55	113	Top	
K53MJF...V	56	113	Top	
K81MF...FOR-TXC	66	136	Top	
K81MF...TXC	66	136	Top	
K83MF...FOR-XP	65	134	Top	
K83MF...FORY-XP	65	134	Top	
K83MF...X-FOR-TXC	66	137	Top	
K83MF...XP	65	134	Top	
K83MF...X-TXC	66	137	Top	
P25MF....	53	107	Plus	
P25MF...CT	53	107	Plus	
P25MF...T	53	107	Plus	
P25MF...V	53	107	Plus	
P2CCMF...	68	140	Line	
P2CCMF...FP	69	142	Line	
P2CCMF...FP-T	69	142	Line	
P2CCMF...LH	69	143	Line	
P2CCMF...LH-T	69	143	Line	
P2CCMF...SP	68	140	Line	
P2CCMF...SP-T	68	140	Line	
P2CCMF...SP-V	68	140	Line	
P2CCMF...T	68	140	Line	
P2CCMF...V	68	140	Line	
P2SCMF...	66	138	Line	
P2SCMF...FP	69	142	Line	
P2SCMF...FP-T	69	142	Line	
P2SCMF...LH	69	143	Line	
P2SCMF...LH-T	69	143	Line	
P2SCMF...SP	66	138	Line	
P2SCMF...SP-T	67	138	Line	
P2SCMF...SP-V	67	138	Line	
P2SCMF...T	67	138	Line	
P2SCMF...V	67	138	Line	
P3CCMF...	68	141	Line	
P3CCMF...SP	68	141	Line	
P3CCMF...SP-T	68	141	Line	
P3CCMF...SP-V	68	141	Line	
P3CCMF...T	68	141	Line	
P3CCMF...V	68	141	Line	
P3SCMF...	67	139	Line	
P3SCMF...SP	67	139	Line	
P3SCMF...SP-T	67	139	Line	
P3SCMF...SP-V	67	139	Line	
P3SCMF...T	67	139	Line	
P3SCMF...V	67	139	Line	
P41MF....	58	119	Plus	
P41MF...CT	58	119	Plus	
P41MF...T	58	119	Plus	
P41MF...V	58	119	Plus	
P61MF...	64	131	Plus	
P61MF...T	64	131	Plus	
P61MF...V	64	131	Plus	
P61MF...XP	64	131	Plus	
S20MF...FOR-TXC	48	098	Top	
S20MF...FORY-TXC	48	098	Top	
S20MF...TXC	48	098	Top	
S24MF...FORY-TXC	54	109	Top	

Filettatura-Thread-Filetage		MF		
CODICE - code	pg. list.	pg. cat.	Typ.	
S24MF...TXC	54	109	Top	
S80MF...TXC	65	135	Top	
S80MF...FOR-TXC	66	135	Top	
V25MF...TXC	54	111	Top	
V83MF...TXC	66	137	Top	
X2CCMF...FOR-TG	71	146	Top	
X2CCMF...TG	71	146	Top	
X2CCMF...FOR-TG	70	145	Top	
X2CCMF...FORY-TG	70	145	Top	
X2CCMF...TG	70	144	Top	
X2CCMF...TXC	70	145	Top	
X2SCMF...TG	71	146	Top	
X2SCMF...TG	70	144	Top	
X3CCMF...TG	70	144	Top	
X3SCMF...TG	70	144	Top	

Filettatura-Thread-Filetage		UNC		
CODICE - code	pg. list.	pg. cat.	Typ.	
01UNC...	72	150	Line	
02UNC...	72	150	Line	
03UNC...	72	150	Line	
00UNC...	72	150	Line	
E20UNC...	72	151	Line	
E20UNC...T	73	151	Line	
E21UNC...	72	151	Line	
E21UNC...T	73	151	Line	
E24UNC...	74	153	Line	
E24UNC...T	74	153	Line	
E24UNC...V	74	153	Line	
E24UNC...XP	74	153	Line	
E25UNC...	74	153	Line	
E25UNC...T	74	153	Line	
E25UNC...V	74	153	Line	
E25UNC...XP	74	153	Line	
E26UNC...NQ	73	152	Line	
E26UNC...SP-NQ	73	152	Line	
E27UNC...NQ	73	152	Line	
E26UNC...CT	73	152	Line	
E26UNC...CT-SP	73	152	Line	
E27UNC...CT	73	152	Line	
E40UNC...	76	157	Line	
E40UNC...T	76	157	Line	
E40UNC...V	76	157	Line	
E40UNC...XP	77	157	Line	
E41UNC...	76	157	Line	
E41UNC...T	76	157	Line	
E41UNC...V	76	157	Line	
E41UNC...XP	77	157	Line	
E60UNC...	77	159	Line	
E60UNC...T	78	159	Line	
E60UNC...V	78	159	Line	
E60UNC...XP	78	159	Line	
E61UNC...	77	159	Line	
E61UNC...T	78	159	Line	
E61UNC...V	78	159	Line	
E61UNC...XP	78	159	Line	
K24UNC...FORY-XP	75	154	Top	

Filettatura-Thread-Filetage		UNC		
CODICE - code	pg. list.	pg. cat.	Typ.	
K24UNC...XP	75	154	Top	
K25UNC...FORY-XP	75	154	Top	
K25UNC...XP	75	154	Top	
K26UNC...FOR-TX	73	152	Top	
K26UNC...TX	73	152	Top	
K27UNC...FOR-TX	73	152	Top	
K27UNC...TX73		152	Top	
K42UNC...CT	77	158	Top	
K42UNC...V	77	158	Top	
K42UNC...V-3BX	77	158	Top	
K43UNC...CT	77	158	Top	
K43UNC...V	77	158	Top	
K43UNC...V-3BX	77	158	Top	
K52UNC...CT	75	156	Top	
K52UNC...V	75	156	Top	
K52UNC...V-3BX	76	156	Top	
K53UNC...CT	75	156	Top	
K53UNC...V	75	156	Top	
K53UNC...V-3BX	76	156	Top	
K82UNC...FOR-XP	79	160	Top	
K82UNC...FORY-XP	79	160	Top	
K82UNC...XP	79	160	Top	
K83UNC...FOR-XP	79	160	Top	
K83UNC...FORY-XP	79	160	Top	
K83UNC...XP	79	160	Top	
P2CCUNC...	80	162	Line	
P2CCUNC...T	80	162	Line	
P2SCUNC...	79	162	Top	
P2SCUNC...T	79	162	Top	
V24UNC...TXC	75	155	Top	
V25UNC...TXC	75	155	Top	
V82UNC...TXC	79	161	Top	
V83UNC...TXC	79	161	Top	

Filettatura-Thread-Filetage		UNF		
CODICE - code	pg. list.	pg. cat.	Typ.	
00UNF...	81	166	Line	
01UNF...	81	166	Line	
03UNF...	81	166	Line	
E20UNF...	82	167	Line	
E20UNF...T	82	167	Line	
E21UNF...	82	167	Line	
E21UNF...T	82	167	Line	
E24UNF...	83	169	Line	
E24UNF...T	83	169	Line	
E24UNF...V	83	169	Line	
E24UNF...XP	83	169	Line	
E25UNF...	83	169	Line	
E25UNF...T	83	169	Line	
E25UNF...V	83	169	Line	
E25UNF...XP	83	169	Line	
E26UNF...NQ	82	168	Line	
E27UNF...NQ	82	168	Line	
E26UNF...CT	82	168	Line	
E27UNF...CT	82	168	Line	

INDICE PRODOTTI

PRODUCTS INDEX
INDEX DES PRODUITS

Segue - Follow - Suite	UNF		
CODICE - code	pg. list.	pg. cat.	Typ.
E40UNF...	85	173	Line
E40UNF...T	85	173	Line
E40UNF...V	85	173	Line
E40UNF...XP	85	173	Line
E41UNF...	85	173	Line
E41UNF...T	85	173	Line
E41UNF...V	85	173	Line
E41UNF...XP	85	173	Line
E60UNF...	86	175	Line
E60UNF...T	86	175	Line
E60UNF...V	86	175	Line
E60UNF...XP	87	175	Line
E61UNF...	86	175	Line
E61UNF...T	86	175	Line
E61UNF...V	86	175	Line
E61UNF...XP	87	175	Line
K24UNF...FOR-Y-XP	84	170	Top
K24UNF...XP	84	170	Top
K25UNF...FOR-Y-XP	84	170	Top
K25UNF...XP	84	170	Top
K27UNF...FOR-TX	83	168	Top
K27UNF...TX	82	168	Top
K42UNF...CT	86	174	Top
K42UNF...V	86	174	Top
K42UNF...V-3BX	86	174	Top
K43UNF...CT	86	174	Top
K43UNF...V	86	174	Top
K43UNF...V-3BX	86	174	Top
K52UNF...CT	84	172	Top
K52UNF...V	84	172	Top
K52UNF...V-3BX	85	172	Top
K53UNF...CT	84	172	Top
K53UNF...V	84	172	Top
K53UNF...V-3BX	85	172	Top
K82UNF...FOR-XP	87	176	Top
K82UNF...FOR-Y-XP	87	176	Top
K82UNF...XP	87	176	Top
K83UNF...FOR-XP	87	176	Top
K83UNF...FOR-Y-XP	87	176	Top
K83UNF...XP	87	176	Top
P2CCUNF...	88	178	Line
P2CCUNF...T	88	178	Line
P2SCUNF...	88	178	Line
P2SCUNF...T	88	178	Line
V24UNF...TXC	84	171	Top
V25UNF...TXC	84	171	Top
V82UNF...TXC	88	177	Top
V83UNF...TXC	88	177	Top

Filettatura-Thread-Filetage	UNEF		
CODICE - code	pg. list.	pg. cat.	Typ.
E21UNEF...	89	182	Line
E21UNEF...T	89	182	Line
E25UNEF...	89	183	Line
E25UNEF...T	89	183	Line
E61UNEF...	89	184	Line
E61UNEF...XP	89	184	Line

Filettatura-Thread-Filetage	UNS		
CODICE - code	pg. list.	pg. cat.	Typ.
E20...UNS...	90	185	Line
E20...UNS...T	90	185	Line
E21...UNS...	90	185	Line
E21...UNS...T	90	185	Line

Filettatura-Thread-Filetage	UN		
CODICE - code	pg. list.	pg. cat.	Typ.
E21-12UN...	91	186	Line
E21-16UN...	91	186	Line
E21-20UN...	91	187	Line
E21-20UN...T	91	187	Line
E21-28UN...	91	187	Line
E21-28UN...T	91	187	Line
E21-32UN...	91	187	Line
E21-32UN...T	91	187	Line
E21-8UN...	91	186	Line
E41-8UN...	91	186	Line
E81-8UN...	91	186	Line

Filettatura-Thread-Filetage	GAS		
CODICE - code	pg. list.	pg. cat.	Typ.
00G...	92	190	Line
01G...	92	190	Line
03G...	92	190	Line
E21G...	93	191	Line
E21G...T	93	191	Line
E25G...	93	193	Line
E25G...T	94	193	Line
E25G...V	93	193	Line
E25G...XP	94	193	Line
E27G...NQ	93	192	Line
E27G...CT	93	192	Line
E41G...	94	197	Line
E41G...+0,05	95	197	Line
E41G...T	95	197	Line
E41G...V	95	197	Line
E61G...	95	198	Line
E61G...T	95	198	Line
E61G...V	95	198	Line
E61G...XP	95	198	Line
K25G...FOR-Y-XP	94	194	Top
K25G...XP	94	194	Top
K27G...FOR-TX	93	192	Top

Segue - Follow - Suite	GAS		
CODICE - code	pg. list.	pg. cat.	Typ.
K27G...TX	93	192	Top
K83G...FOR-XP	96	199	Top
K83G...FOR-Y-XP	96	199	Top
K83G...XP	96	199	Top
P2CCG...	96	202	Line
P2CCG...T	96	202	Line
S24G...FOR-Y-TXC	94	195	Top
S24G...TXC	94	195	Top
S80G...FOR-TXC	96	200	Top
S80G...TXC	96	200	Top
V25G...TXC	94	196	Top
V83G...TXC	96	201	Top
X2CCG...FOR-TG	96	202	Top
X2CCG...TG	96	202	Top

Filettatura-Thread-Filetage	Rp		
CODICE - code	pg. list.	pg. cat.	Typ.
E21RP...	97	204	Line
E21RP...T	97	204	Line

Filettatura-Thread-Filetage	NPSM		
CODICE - code	pg. list.	pg. cat.	Typ.
E21NPSM...	97	206	Line
E21NPSM...T	97	206	Line

Filettatura-Thread-Filetage	NPSF		
CODICE - code	pg. list.	pg. cat.	Typ.
E21NPSF...	97	207	Line
E21NPSF...T	97	207	Line

Filettatura-Thread-Filetage	Rc		
CODICE - code	pg. list.	pg. cat.	Typ.
E21CRC...	97	210	Line
E41CRC...V	97	210	Line
E21LRC...	98	210	Line
E21LRC...TXC	98	210	Line

Filettatura-Thread-Filetage	NPT		
CODICE - code	pg. list.	pg. cat.	Typ.
E21CNPT...	98	212	Line
E21CNPT...AZ	98	213	Line
E41CNPT...V	98	212	Line
E21LNPT...	98	212	Line
E21LNPT...AZ	99	213	Line
E21LNPT...TXC	98	212	Line

INDICE PRODOTTI

PRODUCTS INDEX

INDEX DES PRODUITS

Filettatura-Thread-Filetage	NPTF		
CODICE - code	pg. list.	pg. cat.	Typ.
E21CNPTF...	99	214	Line
E41CNPTF...V	99	214	Line
E21LNPTF...	99	214	Line
E21LNPTF...TXC	99	214	Line

Filettatura-Thread-Filetage	BSW		
CODICE - code	pg. list.	pg. cat.	Typ.
00W...	100	218	Line
01W...	100	218	Line
02W...	100	218	Line
03W...	100	218	Line
E20W...	101	219	Line
E20W...T	101	219	Line
E21W...	101	219	Line
E21W...T	101	219	Line
E24W...	101	220	Line
E24W...T	101	220	Line
E24W...V	101	220	Line
E24W...XP	102	220	Line
E25W...	101	220	Line
E25W...T	101	220	Line
E25W...V	101	220	Line
E25W...XP	102	220	Line
E60W...	102	221	Line
E60W...T	102	221	Line
E60W...V	102	221	Line
E60W...XP	102	221	Line
E61W...	102	221	Line
E61W...T	102	221	Line
E61W...V	102	221	Line
E61W...XP	102	221	Line

Filettatura-Thread-Filetage	PG		
CODICE - code	pg. list.	pg. cat.	Typ.
E21PG...	103	222	Line
E21PG...T	103	222	Line
E25PG...	103	222	Line
E25PG...T	103	222	Line

Filettatura-Thread-Filetage	Tr (TPN)		
CODICE - code	pg. list.	pg. cat.	Typ.
E21TPN...	103	223	Line
E21TPN...V	103	223	Line
E21TPN...LH	103	223	Line
E21TPN...LH-V	103	223	Line

Filettatura-Thread-Filetage	Rd		
CODICE - code	pg. list.	pg. cat.	Typ.
E21RD...	104	224	Line
E21RD...T	104	224	Line

Filettatura-Thread-Filetage	ISO 529-EGM		
CODICE - code	pg. list.	pg. cat.	Typ.
529E18M...	104	227	Line
529E18M...T	104	227	Line
529E24M...	104	227	Line
529E24M...T	104	227	Line
529E26M...CT	104	226	Line
529E60M...	105	228	Line
529E60M...XP	105	228	Line
529E80M...	105	228	Line
529E80M...XP	105	228	Top
529K26M...TXC	104	226	Top
E20EGM...	105	230	Line
E20EGM...T	105	230	Line
E21EGM...	105	230	Line
E21EGM...T	105	230	Line
E24EGM...	106	231	Line
E24EGM...XP	106	231	Line
E25EGM...	106	231	Top
E25EGM...XP	106	231	Line
E60EGM...	106	232	Line
E60EGM...XP	106	232	Line
E61EGM...	106	232	Line
E61EGM...XP	106	232	Line

Filettatura-Thread-Filetage	EPF		
CODICE - code	pg. list.	pg. cat.	Typ.
EPFALUM...	107	234	Line
EPFALUM...VS	107	234	Line
EPFM...	107	234	Line
EPFM...VS	107	234	Line
EPFMF...	107	234	Line
EPFMF...VS	107	234	Line

Filettatura-Thread-Filetage	GO / NO-GO		
CODICE - code	pg. list.	pg. cat.	Typ.
P-NPG...	110	203	Line
P-NPM...	108	79	Line
P-NPMF...	108	147-148	Line
P-NPNPT...	110	215	Line
P-NPNPTF...	110	215	Line
P-NPRC...	110	211	Line
P-NPUNC...	109	163	Line
P-NPUNEF...	109	188	Line
P-NPUNF...	109	179	Line

Filettatura-Thread-Filetage	DIES		
CODICE - code	pg. list.	pg. cat.	Typ.
100-99M...	111	236	Line
100E99XM...	111	236	Line
100S99M...	111	236	Line
110-99M...	112	237-239	Line
110E99XM...	113	237-238	Line
110S99M...	113	237-238	Line
200-99W...	116	245	Line
300-99U...	114	240	Line
300-599U...	114	240	Line
310-99U...	114	241	Line
310S99U...	114	241	Line
400-99G...	115	242	Line
400-E99XG...	115	242	Line
400S99G...	115	242	Line
410-99RC...	115	243	Line
420-99NPT...	115	244	Line
430-99NPTF...	115	244	Line
700-99PG...	116	246	Line