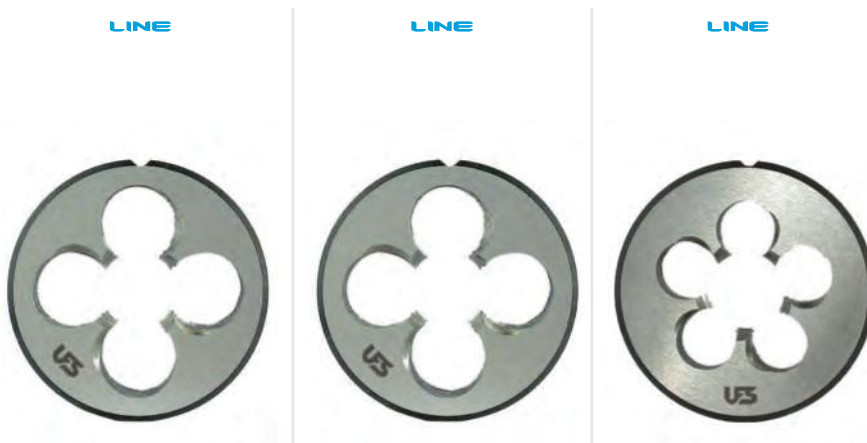
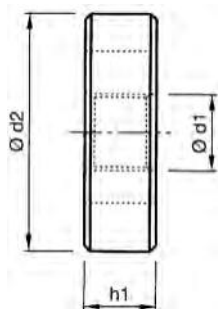




FILIERE TONDE IMBOCCO CORRETTO

ROUND SPLIT DIES WITH SPIRAL POINTED - FILIÈRES RONDES, ENTRÉE GUN

DIN - EN 22568



Filettatura sinistra - LH
Left hand
Filetage Gauche - LH

Inox
Stainless Steel

Materiale - Material - Matériau

HSS

HSS

HSSE

Imbocco - Chamfer - Entrée

1,75xP

1,75xP

1,75xP

Tolleranza - Tolerance - Tolérance

ISO / 6g

ISO / 6g

ISO / 6g

Trattamento superficiale - Surface treatment - Revêtement

BR

BR

BR

| Ød ₁ M | P mm | Ød ₂ | h ₁ | CODICE - CODE | | |
|----------------------|---------|-----------------|----------------|---------------|------------|-------------|
| | | | | 100-99M... | 100S99M... | 100E99XM... |
| 2 | 0,4 | 16 | 5 | ○ | - | - |
| 2,2 | 0,45 | 16 | 5 | ○ | - | - |
| 2,3 | 0,4 | 16 | 5 | ○ | - | - |
| 2,5 | 0,45 | 16 | 5 | ○ | - | - |
| 2,6 | 0,45 | 16 | 5 | ○ | - | - |
| 3 | 0,5 | 20 | 5 | ○ | ○ | ○ |
| 3,5 | 0,6 | 20 | 5 | ○ | - | - |
| 4 | 0,7 | 20 | 5 | ○ | ○ | ○ |
| 4,5 | 0,75 | 20 | 7 | ○ | - | - |
| 5 | 0,8 | 20 | 7 | ○ | ○ | ○ |
| 6 | 1 | 20 | 7 | ○ | ○ | ○ |
| 7 | 1 | 25 | 9 | ○ | ○ | - |
| 8 | 1,25 | 25 | 9 | ○ | ○ | ○ |
| 9 | 1,25 | 25 | 9 | ○ | ○ | - |
| 10 | 1,5 | 30 | 11 | ○ | ○ | ○ |
| 11 | 1,5 | 30 | 11 | ○ | ○ | - |
| 12 | 1,75 | 38 | 14 | ○ | ○ | ○ |
| 14 | 2 | 38 | 14 | ○ | ○ | ○ |
| 16 | 2 | 45 | 18 | ○ | ○ | ○ |
| 18 | 2,5 | 45 | 18 | ○ | ○ | ○ |
| 20 | 2,5 | 45 | 18 | ○ | ○ | ○ |
| 22 | 2,5 | 55 | 22 | ○ | ○ | ○ |
| 24 | 3 | 55 | 22 | ○ | ○ | ○ |
| 27 | 3 | 65 | 25 | ○ | ○ | ○ |
| 30 | 3,5 | 65 | 25 | ○ | ○ | ○ |
| 33 | 3,5 | 65 | 25 | ○ | ○ | ○ |
| 36 | 4 | 65 | 25 | ○ | ○ | ○ |
| 39 | 4 | 75 | 30 | ○ | ○ | ○ |
| 42 | 4,5 | 75 | 30 | ○ | ○ | ○ |
| 45 | 4,5 | 90 | 36 | ○ | ○ | ○ |
| 48 | 5 | 90 | 36 | ○ | ○ | ○ |
| 52 | 5 | 90 | 36 | ○ | ○ | ○ |

Confezione: Singola
Box: Single
Colis: Unique

€ Pag. listino - Price list - Liste des prix

111

111

111

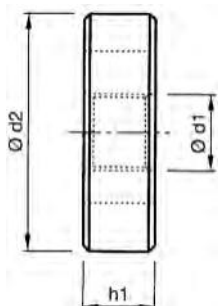
● Standard

○ Disponibilità da richiedere, prezzo a listino
On enquiry, standard price-list / Stock à vérifier

★ Solo a richiesta
Only on request / Sur demande

FILIERE TONDE IMBOCCO CORRETTO
 ROUND SPLIT DIES WITH SPIRAL POINTED - FILIÈRES RONDES, ENTRÉE GUN

DIN - EN 22568



LINE



LINE



LINE



Filettatura sinistra - LH
 Left hand
 Filetage Gauche - LH

Inox
 Stainless Steel

Materiale - Material - Matériau

HSS

HSS

HSSE

Imbocco - Chamfer - Entrée

1,75xP

1,75xP

1,75xP

Tolleranza - Tolerance - Tolérance

ISO / 6g

ISO / 6g

ISO / 6g

Trattamento superficiale - Surface treatment - Revêtement

BR

BR

BR

| Ød ₁ MF | P mm | Ød ₂ | h ₁ | 110-99M... | CODICE - CODE 110S99M... | 110E99XM... |
|-----------------------|---------|-----------------|----------------|------------|-----------------------------|-------------|
| 2 | 0,25 | 16 | 5 | ○ | * | - |
| 2,2 | 0,25 | 16 | 5 | ○ | * | - |
| 2,5 | 0,35 | 16 | 5 | ○ | * | - |
| 3 | 0,35 | 20 | 5 | ○ | * | * |
| 4 | 0,5 | 20 | 5 | ○ | ○ | ○ |
| 5 | 0,5 | 20 | 5 | ○ | ○ | ○ |
| 6 | 0,75 | 20 | 7 | ○ | ○ | ○ |
| 7 | 0,75 | 25 | 9 | ○ | ○ | * |
| 8 | 0,75 | 25 | 9 | ○ | ○ | * |
| 8 | 1 | 25 | 9 | ○ | ○ | ○ |
| 9 | 0,75 | 25 | 9 | ○ | ○ | * |
| 9 | 1 | 25 | 9 | ○ | ○ | * |
| 10 | 0,75 | 30 | 11 | ○ | ○ | ○ |
| 10 | 1 | 30 | 11 | ○ | ○ | ○ |
| 10 | 1,25 | 30 | 11 | ○ | ○ | * |
| 11 | 1 | 30 | 10 | ○ | ○ | * |
| 12 | 1 | 38 | 10 | ○ | ○ | ○ |
| 12 | 1,25 | 38 | 10 | ○ | ○ | ○ |
| 12 | 1,5 | 38 | 10 | ○ | ○ | ○ |
| 13 | 1 | 38 | 10 | ○ | * | * |
| 13 | 1,5 | 38 | 10 | ○ | * | * |
| 14 | 1 | 38 | 10 | ○ | ○ | ○ |
| 14 | 1,25 | 38 | 10 | ○ | ○ | ○ |
| 14 | 1,5 | 38 | 10 | ○ | ○ | ○ |
| 15 | 1 | 38 | 10 | ○ | ○ | * |
| 15 | 1,5 | 38 | 10 | ○ | ○ | * |
| 16 | 1 | 45 | 14 | ○ | ○ | ○ |
| 16 | 1,25 | 45 | 14 | ○ | ○ | * |
| 16 | 1,5 | 45 | 14 | ○ | ○ | ○ |
| 18 | 1 | 45 | 14 | ○ | ○ | ○ |
| 18 | 1,5 | 45 | 14 | ○ | ○ | ○ |

Segue diametri
 Diameters, to be continued - Diamètres à suivre

Pag. 238-239

Confezione: Singola
 Box: Single
 Colis: Unique

€ Pag. listino - Price list - Liste des prix

112

113

113

● Standard

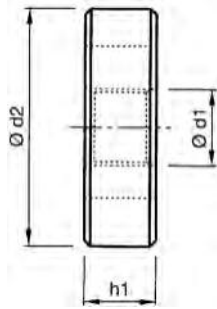
○ Disponibilità da richiedere, prezzo a listino
 On enquiry, standard price-list / Stock à vérifier

* Solo a richiesta
 Only on request / Sur demande

FILIERE TONDE IMBOCCO CORRETTO

ROUND SPLIT DIES WITH SPIRAL POINTED - FILIÈRES RONDES, ENTRÉE GUN

DIN - EN 22568



Filettatura sinistra - LH
Left hand
Filetage Gauche - LH

Inox
Stainless Steel

Materiale - Material - Matériau

HSS

HSS

HSSE

Imbocco - Chamfer - Entrée

1,75xP

1,75xP

1,75xP

Tolleranza - Tolerance - Tolérance

ISO / 6g

ISO / 6g

ISO / 6g

Trattamento superficiale - Surface treatment - Revêtement

BR

BR

BR

| Ød ₁ MF | P mm | Ød ₂ | h ₁ | CODICE - CODE |
|-----------------------|---------|-----------------|----------------|---|
| | | | | 110-99M... 110S99M... 110E99XM... |
| 18 | 2 | 45 | 14 | ○ ○ ○ |
| 20 | 1 | 45 | 14 | ○ ○ ○ |
| 20 | 1,5 | 45 | 14 | ○ ○ ○ |
| 20 | 2 | 45 | 14 | ○ ○ ○ |
| 22 | 1 | 55 | 16 | ○ ○ ○ |
| 22 | 1,5 | 55 | 16 | ○ ○ ○ |
| 22 | 2 | 55 | 16 | ○ ○ ○ |
| 24 | 1 | 55 | 16 | ○ ○ ○ |
| 24 | 1,5 | 55 | 16 | ○ ○ ○ |
| 24 | 2 | 55 | 16 | ○ ○ ○ |
| 25 | 1 | 55 | 16 | ○ ○ ○ |
| 25 | 1,5 | 55 | 16 | ○ ○ ○ |
| 25 | 2 | 55 | 16 | ○ ○ ○ |
| 26 | 1 | 55 | 16 | ○ ○ ○ |
| 26 | 1,5 | 55 | 16 | ○ ○ ○ |
| 26 | 2 | 55 | 16 | ○ ○ ○ |
| 27 | 1 | 65 | 18 | ○ ○ ○ |
| 27 | 1,5 | 65 | 18 | ○ ○ ○ |
| 27 | 2 | 65 | 18 | ○ ○ ○ |
| 28 | 1 | 65 | 18 | ○ ○ ○ |
| 28 | 1,5 | 65 | 18 | ○ ○ ○ |
| 28 | 2 | 65 | 18 | ○ ○ ○ |
| 30 | 1 | 65 | 18 | ○ ○ ○ |
| 30 | 1,5 | 65 | 18 | ○ ○ ○ |
| 30 | 2 | 65 | 18 | ○ ○ ○ |
| 32 | 1 | 65 | 18 | ○ ○ ○ |
| 32 | 1,5 | 65 | 18 | ○ ○ ○ |
| 32 | 2 | 65 | 18 | ○ ○ ○ |
| 33 | 1 | 65 | 18 | ○ ○ ○ |
| 33 | 1,5 | 65 | 18 | ○ ○ ○ |
| 33 | 2 | 65 | 18 | ○ ○ ○ |

Segue diametri
Diameters, to be continued - Diamètres à suivre ▶ Pag. 239

Confezione: Singola
Box: Single
Colis: Unique

€ Pag. listino - Price list - Liste des prix

112

113

113

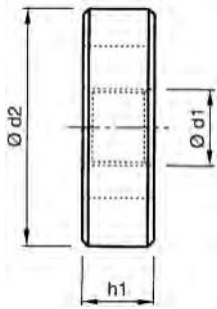
● Standard

○ Disponibilità da richiedere, prezzo a listino
On enquiry, standard price-list / Stock à vérifier

★ Solo a richiesta
Only on request / Sur demande

DIN - EN 22568

LINE



Materiale - Material - Matériau

HSS

Imbocco - Chamfer - Entrée

1,75xP

Tolleranza - Tolerance - Tolérance

ISO / 6g

Trattamento superficiale - Surface treatment - Revêtement

BR

| Ød ₁ MF | P mm | Ød ₂ | h ₁ | CODICE - CODE | | |
|-----------------------|---------|-----------------|----------------|---------------|--|--|
| | | | | 110-99M... | | |
| 34 | 1 | 65 | 18 | ○ | | |
| 34 | 1,5 | 65 | 18 | ○ | | |
| 35 | 1 | 65 | 18 | ○ | | |
| 35 | 1,5 | 65 | 18 | ○ | | |
| 35 | 2 | 65 | 18 | ○ | | |
| 36 | 1,5 | 65 | 18 | ○ | | |
| 36 | 2 | 65 | 18 | ○ | | |
| 36 | 3 | 65 | 25 | ○ | | |
| 38 | 1 | 75 | 20 | ○ | | |
| 38 | 1,5 | 75 | 20 | ○ | | |
| 38 | 2 | 75 | 20 | ○ | | |
| 39 | 1,5 | 75 | 20 | ○ | | |
| 39 | 2 | 75 | 20 | ○ | | |
| 39 | 3 | 75 | 30 | ○ | | |
| 40 | 1,5 | 75 | 20 | ○ | | |
| 40 | 2 | 75 | 20 | ○ | | |
| 40 | 3 | 75 | 30 | ○ | | |
| 42 | 1,5 | 75 | 20 | ○ | | |
| 42 | 2 | 75 | 20 | ○ | | |
| 42 | 3 | 75 | 30 | ○ | | |
| 45 | 1,5 | 90 | 22 | ○ | | |
| 45 | 2 | 90 | 22 | ○ | | |
| 45 | 3 | 90 | 36 | ○ | | |
| 48 | 1,5 | 90 | 22 | ○ | | |
| 48 | 2 | 90 | 22 | ○ | | |
| 48 | 3 | 90 | 36 | ○ | | |
| 50 | 1,5 | 90 | 22 | ○ | | |
| 50 | 2 | 90 | 22 | ○ | | |
| 50 | 3 | 90 | 36 | ○ | | |
| 52 | 1,5 | 90 | 22 | ○ | | |
| 52 | 2 | 90 | 22 | ○ | | |
| 52 | 3 | 90 | 36 | ○ | | |

Confezione: Singola
 Box: Single
 Colis: Unique

€ Pag. listino - Price list - Liste des prix

112

● Standard

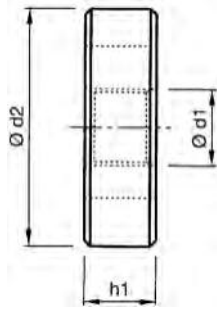
○ Disponibilità da richiedere, prezzo a listino
 On enquiry, standard price-list / Stock à vérifier

★ Solo a richiesta
 Only on request / Sur demande

FILIERE TONDE IMBOCCO CORRETTO

ROUND SPLIT DIES WITH SPIRAL POINTED - FILIÈRES RONDES, ENTRÉE GUN

DIN - EN 22568



Filettatura sinistra - LH
Left hand
Filetage Gauche - LH



Materiale - Material - Matériau

HSS

HSS

Imbocco - Chamfer - Entrée

1,75xP

1,75xP

Tolleranza - Tolerance - Tolérance

2A

2A

Trattamento superficiale - Surface treatment - Revêtement

BR

BR

| Ød ₁ UNC | TPI | Ød ₂ | h ₁ | 300-99U... | CODICE - CODE 300S99U... |
|------------------------|-----|-----------------|----------------|------------|-----------------------------|
| 4 | 40 | 20 | 5 | ○ | ○ |
| 5 | 40 | 20 | 5 | ○ | ○ |
| 6 | 32 | 20 | 5 | ○ | ○ |
| 8 | 32 | 20 | 7 | ○ | ○ |
| 10 | 24 | 20 | 7 | ○ | ○ |
| 12 | 24 | 20 | 7 | ○ | ○ |
| 1/4 | 20 | 25 | 9 | ○ | ○ |
| 1/4 | 20 | 20 | 7 | * | * |
| 5/16 | 18 | 25 | 9 | ○ | ○ |
| 3/8 | 16 | 30 | 11 | ○ | ○ |
| 7/16 | 14 | 30 | 11 | ○ | ○ |
| 1/2 | 13 | 38 | 14 | ○ | - |
| 9/16 | 12 | 38 | 14 | ○ | - |
| 5/8 | 11 | 45 | 18 | ○ | - |
| 3/4 | 10 | 45 | 18 | ○ | - |
| 7/8 | 9 | 55 | 22 | ○ | - |
| 1" | 8 | 55 | 22 | ○ | - |
| 1" 1/8 | 7 | 65 | 25 | ○ | - |
| 1" 1/4 | 7 | 65 | 25 | ○ | - |
| 1" 1/2 | 6 | 75 | 30 | ○ | - |
| 1" 3/4 | 5 | 90 | 36 | ○ | - |
| 2" | 4,5 | 90 | 36 | ○ | - |

Confezione: Singola
Box: Single
Colis: Unique

€ Pag. listino - Price list - Liste des prix

114

114

● Standard

○ Disponibilità da richiedere, prezzo a listino
On enquiry, standard price-list / Stock à vérifier

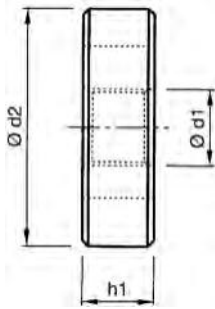
* Solo a richiesta
Only on request / Sur demande

FILIERE TONDE IMBOCCO CORRETTO

ROUND SPLIT DIES WITH SPIRAL POINTED - FILIÈRES RONDES, ENTRÉE GUN

DIN - EN 22568

LINE



Materiale - Material - Matériau

HSS

Imbocco - Chamfer - Entrée

1,75xP

Tolleranza - Tolerance - Tolérance

-

Trattamento superficiale - Surface treatment - Revêtement

BR

| Ød ₁ * NPT | TPI | Ød ₂ | h ₁ |
|--------------------------|------|-----------------|----------------|
| 1/16 | 27 | 25 | 10 |
| 1/8 | 27 | 38 | 10 |
| 1/8 | 27 | 30 | 10 |
| 1/4 | 18 | 38 | 15 |
| 3/8 | 18 | 45 | 15,3 |
| 1/2 | 14 | 45 | 20 |
| 3/4 | 14 | 65 | 20,2 |
| 3/4 | 14 | 55 | 20,2 |
| 1" | 11,5 | 65 | 25 |
| 1" 1/4 | 11,5 | 75 | 25,6 |
| 1" 1/2 | 11,5 | 90 | 26 |
| 2" | 11,5 | 105 | 26,9 |

*ANSI/ASME B1.20.1

| Ød ₁ * NPTF | TPI | Ød ₂ | h ₁ |
|---------------------------|------|-----------------|----------------|
| 1/16 | 27 | 25 | 11 |
| 1/8 | 27 | 38 | 10 |
| 1/4 | 18 | 38 | 15 |
| 3/8 | 18 | 45 | 15 |
| 1/2 | 14 | 45 | 20 |
| 3/4 | 14 | 65 | 20,2 |
| 3/4 | 14 | 55 | 20,2 |
| 1" | 11,5 | 65 | 25 |

*ANSI/ASME B1.20.3

CODICE - CODE

420-99NPT...

*

o

*

o

o

o

o

*

o

o

o

o

CODICE - CODE

430-99NPTF...

*

o

o

o

o

o

*

o

Confezione: Singola
Box: Single
Colis: Unique

€ Pag. listino - Price list - Liste des prix

115

● Standard

o Disponibilità da richiedere, prezzo a listino
On enquiry, standard price-list / Stock à vérifier

* Solo a richiesta
Only on request / Sur demande

